

RUNGU® REAR RACK OWNER MANUAL - USE WITH THE RUNGU ELECTRIC JUGGERNAUT

Congratulations on purchasing the Rungu Rear Rack for your Rungu Electric Juggernaut¹! This document reviews the installation and capabilities of the rear rack. Before you ride with your Rear Rack, *please read the following instructions carefully.*



IMPORTANT- Standard Bearer Machines will not be liable for any damage or injury that may occur due to the use of our products. By using the Rear Rack, you are agreeing to Standard Bearer Machines, LLC Terms and Conditions and the warnings and conditions included in this document.

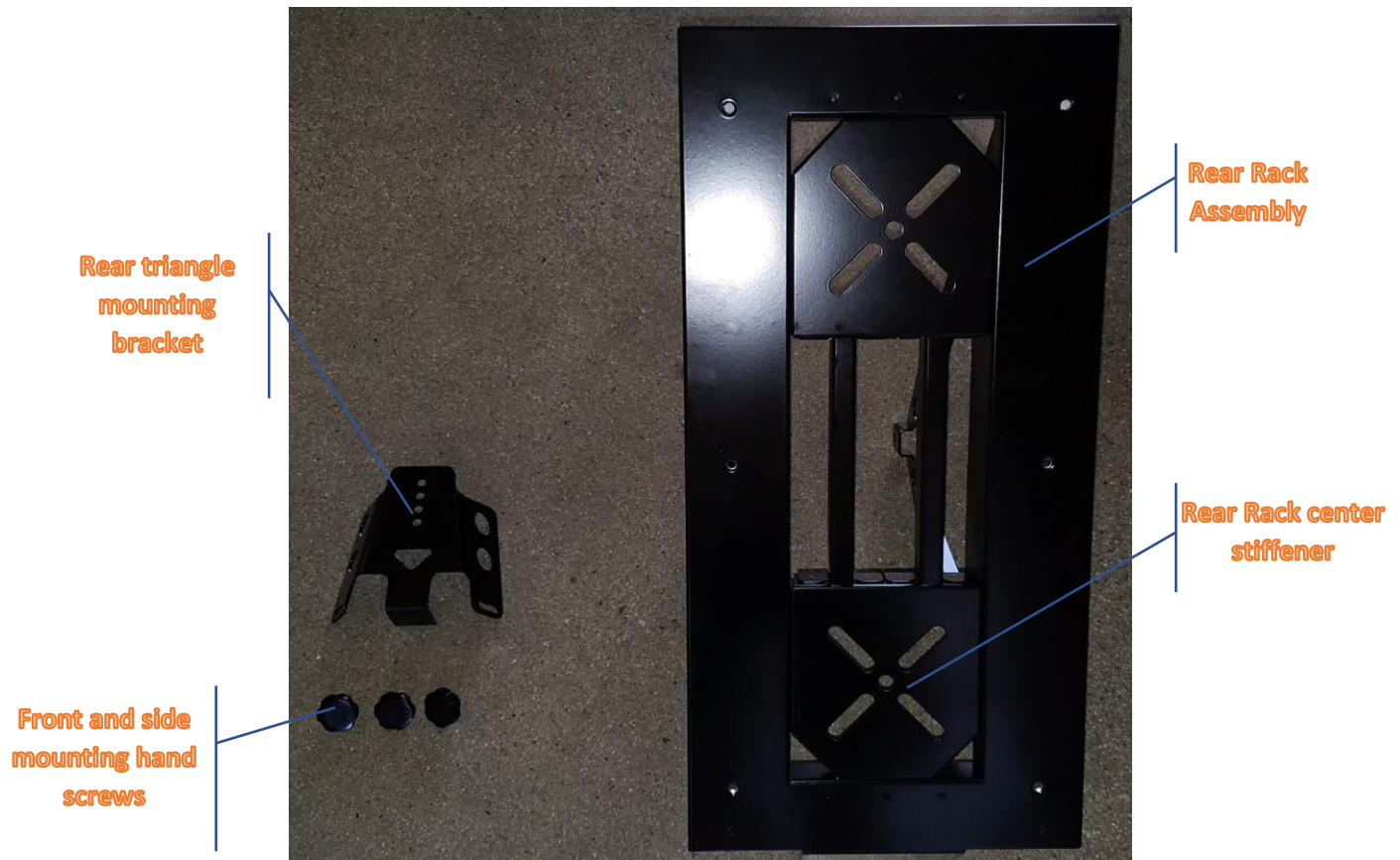
¹ As the owner, you agree and are bound by all sales and transfer conditions as defined in “SBM Rungu Sales Terms and Conditions US 2017a” or “SBM Rungu Sales Terms and Conditions US 2017 – Demo Model.” Copies of these documents are available on the USB drive that ships with the product or upon request by e-mailing sales@riderungu.com.

Contents

Parts, Features and specifications	3
Parts identification	3
Top/Plan View Dimensions (inches)	5
Rear/elevation view dimensions (inches)	6
Side/elevation view dimensions	6
Installation and removal instructions	7
Tools required	7
Preparation	7
Installing the Rear Triangle Mounting Plate	8
Installing the Rear Rack	9
Removing the Rear Rack	14
Further questions	17

Parts, Features and specifications

Parts identification



Warning: The Rear Rack center stiffener can be removed from the Rear Rack Assembly. Because the Rear Rack Center Stiffener increases the overall strength of the Rear Rack Assembly, DO NOT remove it. Removing the stiffener reduces the carrying capability to less than 100 lbs. (45kg).

Not shown

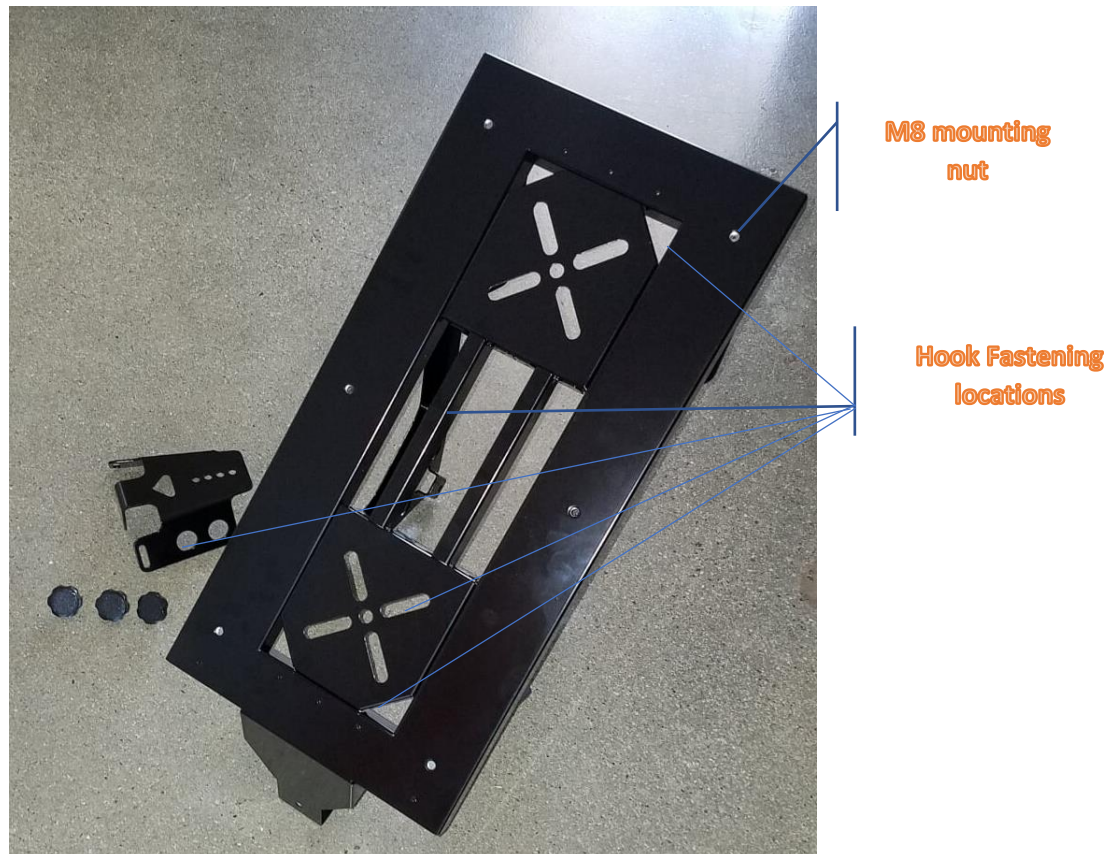
- 2 ea. 20mm M6 socket head cap screws and washers
- Left side torque arm (factory installed if purchased with Electric Juggernaut)
- Right side torque arm (factory installed if purchased with Electric Juggernaut)

Features and specifications

The Rear Rack was designed with outdoor adventure and practicality in mind. The rack is designed to support an evenly-distributed load of 200 lbs. The rack has more than 32 places to hook a bungee cord, webbing or the end of a strap to fasten your payload. The rack also has 6 embedded M8 nuts on the top surface for eye-bolts and other anchors. There are 4 embedded M6 nuts on the right side for additional racking for side carrying equipment too long to be laid flat.

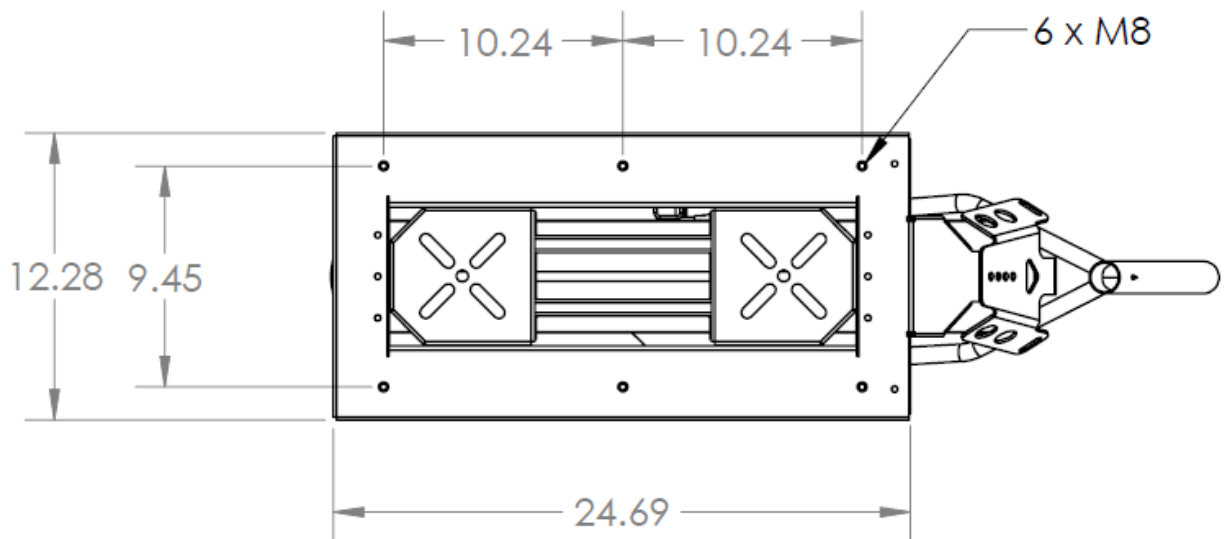
Warning: Carrying loads of more than 100 lbs. (45 kg) requires significantly longer braking distances and changes the ride characteristics of the Rungu Electric Juggernaut. Operate the Electric Juggernaut with caution.

Warning: DO NOT USE THE REAR RACK TO CARRY PASSENGERS. The Rear Rack is not designed to carry passengers. Standard Bearer Machines will not be liable for any injury that may occur to a passenger riding on the Rear Rack or to the person controlling the Electric Juggernaut while carrying a passenger on the Rear Rack. Standard Bearer Machines, LLC will not be liable for any damage to equipment because of carrying a passenger on the Rear Rack.

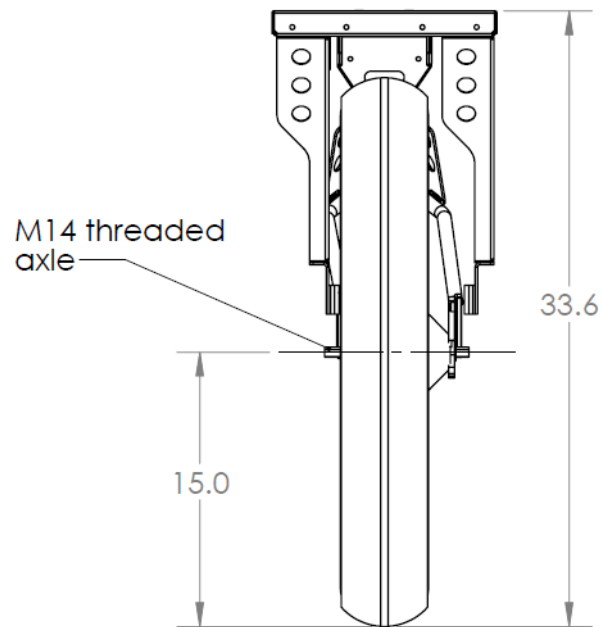




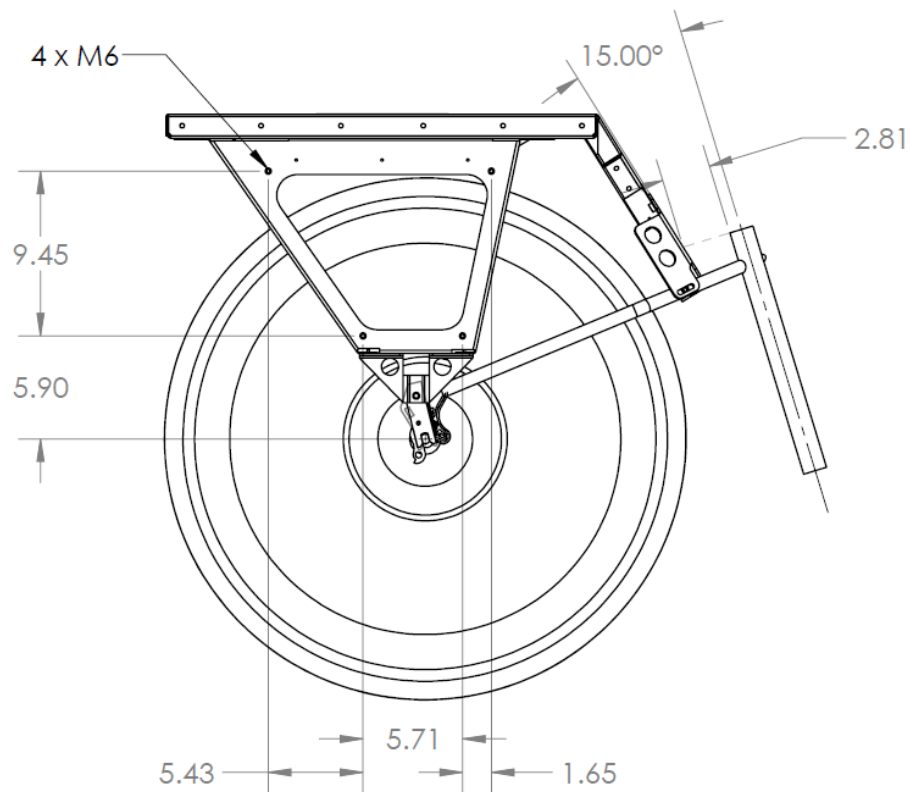
Top/Plan View Dimensions (inches)



Rear/elevation view dimensions (inches)



Side/elevation view dimensions



Installation and removal instructions

Tools required

5mm hex wrench

Preparation

If you purchased your Rear Rack with your Electric Juggernaut, the factory-installed torque arms have mounting holes to mount the sides of the Rear Rack. The torque arms are shown below. Skip to the section "[Installing the Rear Rack](#)"; the factory has also installed the Rear Triangle Mounting Plate.



i Right Torque Arm - Rear Rack Enabled



ii Left Torque Arm - Rear Rack Enabled

NOTE: IF YOU ARE RECEIVING THE REAR RACK AFTER HAVING RECEIVED/PURCHASED A RUNGU ELECTRIC JUGGERNAUT AND THE TORQUE ARMS DO NOT LOOK LIKE THOSE PICTURED ABOVE, STOP AND INSTALL THE REAR RACK-ENABLED TORQUE ARMS FIRST. The torque arms on your Electric Juggernaut need to be replaced with the rear rack-enabled torque arms to mount the Rear Rack. Refer to the installation instructions included with the Rear Rack Enabled Torque Arms to replace the torque arms on your Electric Juggernaut.

Installing the Rear Triangle Mounting Plate

Place the Rear Triangle Mounting Plate as shown below behind the saddle. Insert and finger tighten the M6 screw and washer through the slots on both sides of the plate to fasten the plate to M6 threaded holes on either side of the rear triangle. DO NOT tighten the screws.



Installing the Rear Rack

- 1) Position the rack so that the front section faces up and the rear rests on the ground behind the rear wheel.



Rear
Derailleur

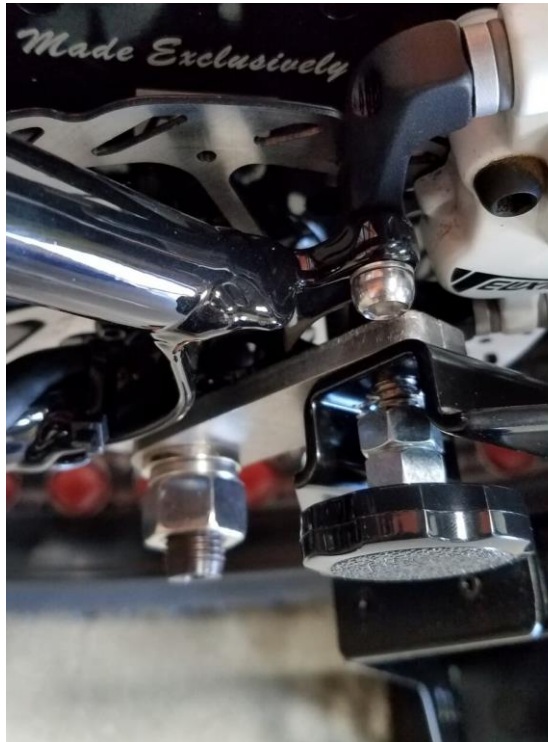
Position the outer flanges on the right and left so that they are on the outside of the left torque arm as shown below, and...



Position the right flange of the rear rack outside of the right torque arm as shown below.



- 2) Insert a side mounting screw (has two nuts on the shaft) into the left side flange and the threaded hole of the torque arm. Do not tighten.



- 3) Insert a side mounting screw (has two nuts on the shaft) into the ride side flange and the threaded hole of the torque arm. Do not tighten.



- 4) Rotate the Rear Rack vertically and lift the Rear Rack Mounting Plate so that the front section of the Rear Rack fits under the Rear Rack Mounting plate. Line up the mounting hole on the Rear Rack with one of the four mounting holes on the Rear Rack Mounting Plate. Use a carpenter's level to determine which hole alignment works best to keep the rear rack top surface parallel to the ground.



- 5) Fasten the rear rack to the rack mounting plate with the remaining mounting hand screw. Tighten the screw by hand.



- 6) Use a 5mm hex wrench to tighten the hex bolt on each side of the Rear Rack Mounting Plate.



- 7) Hand tighten the hand screws on the right and left sides of the Rear Rack.



The Rear Rack is now ready for use! If you decide to remove the Rear Rack, follow the directions below. Subsequent re-installations do not require re-alignment of the Rear Rack Mounting Plate so expect them to take less than two minutes to achieve.

Removing the Rear Rack

You may want to remove the rear rack. If so, the instructions below show how to remove the rack without removing the Rear Rack Mounting Plate. Leaving the Rear Rack Mounting Plate in place makes reinstallation easier.

- 1) Loosen and Remove the Front Hand screw.



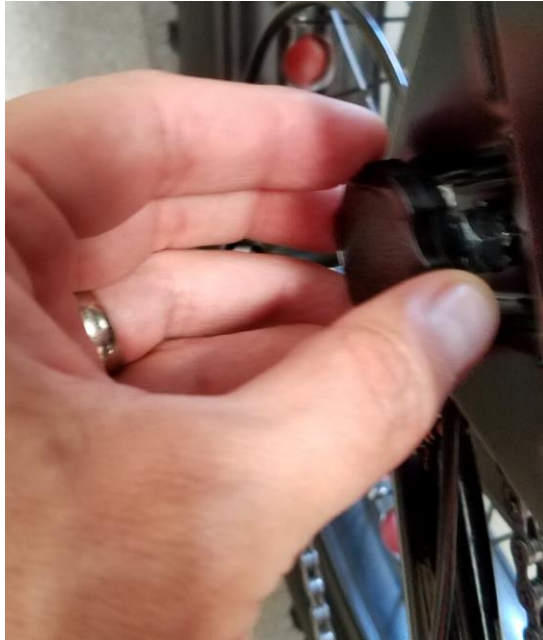
- 2) Rotate the Rack so that it rests on the ground behind the trike.



- 3) Replace the Front Hand screw into the threaded hole in the front of the rack. This helps you to find the front hand screw the next time you want to install the rack.



- 4) Loosen and remove both the right and left side hand screws.





- 5) Replace the right and left side hand screws into the threaded holes on the surface of the rack. This will help you find them the next time you want to install the rack.



Further questions

Contact support by e-mail at support@riderungu.com or call +1.949.877.9755