

RUNGU® TAILLIGHT INSTALLATION AND OPERATION

The Rungu taillight by GUB provides great visibility for Rungu riders on and off-road when riding at night. The taillight has five different modes of operation, and using the appropriate mount, attaches to any Rungu or Rungu Dualie. The taillight includes a sensor that detects braking causing the taillight to illuminate more in the same manner as a brake light.



Contents

Installing the light to a seatpost (Rungu Juggernaut/Dualie Standard).....	3
Tools required	3
Installation	3
Installing the light to a Rungu Cargo Rack – Single Battery Models (Rungu Dualie Steep/Rugged).....	5
Tools required	5
Installation	5
Installing the light to a Rungu Cargo Rack – Dual Battery Models (Rungu XR Models).....	9
Tools required	9
Installation	9
Charging the taillight.....	13
Operating the taillight.....	15
Turning the taillight on and off	15
Taillight operating modes	15

Installing the light to a seatpost (Rungu Juggernaut/Dualie Standard)

Tools required

- None

Installation

The taillight kit comes with the mounting strap and socket, taillight and charging cable. First strap the socket to the seat post as shown below.



Make sure to orient the socket so that it points the tail light horizontally to the rear as shown below.



Screw the taillight into the socket.



Installing the light to a Rungu Cargo Rack – Single Battery Models (Rungu Dualie Steep/Rugged)

Tools required

- 5mm hex wrench

Installation

The taillight kit comes with the Cargo Rack mount with socket, two M6 screws and washers, taillight and charging cable as shown below.



First, use the 5mm hex wrench to remove the two screws holding the Cargo Rack stiffener in place in the rear of the Cargo Rack.

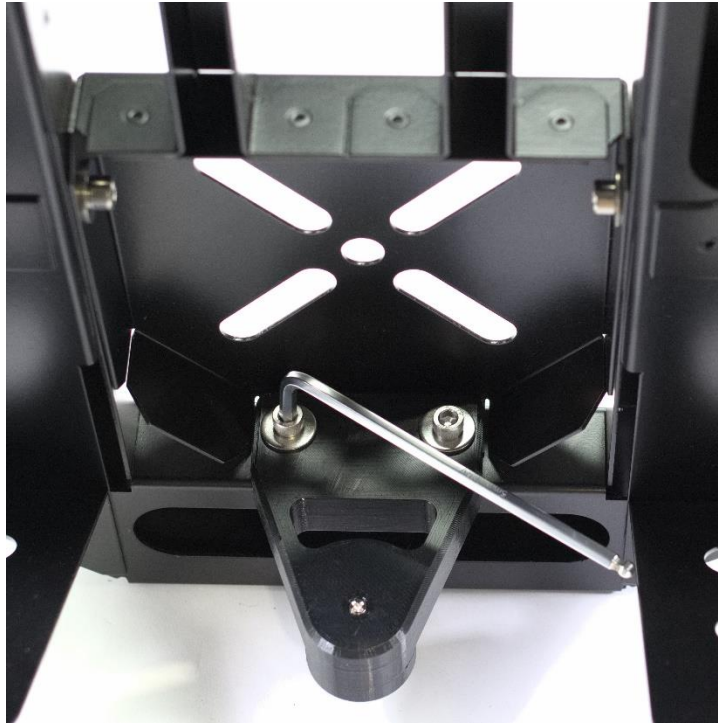




Align the mount with the screw holes as shown and use the 5mm hex wrench to install the first M6 screw and washer from the installation kit. Note that the socket side of the mount faces the rear of the cargo rack.



Install the second screw into the slot and use the hex wrench to tighten the screw into the Cargo Rack. Tighten both screws.



The installed mount should appear the same as below



Screw the taillight into the mount socket.



Installing the light to a Rungu Cargo Rack – Dual Battery Models (Rungu XR Models)

Tools required

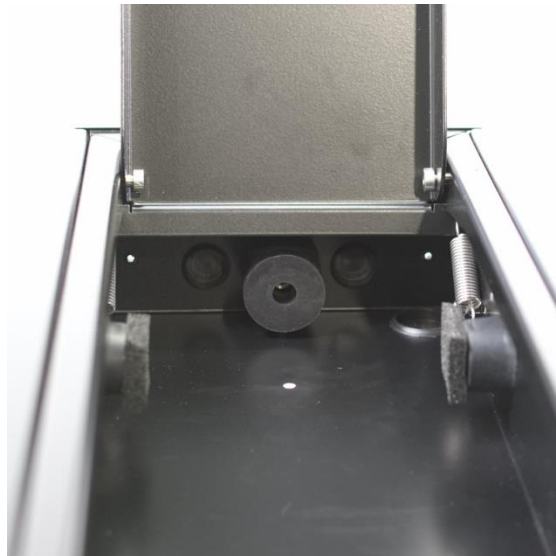
- 5mm hex wrench
- 10mm socket wrench
- Needlenose pliers

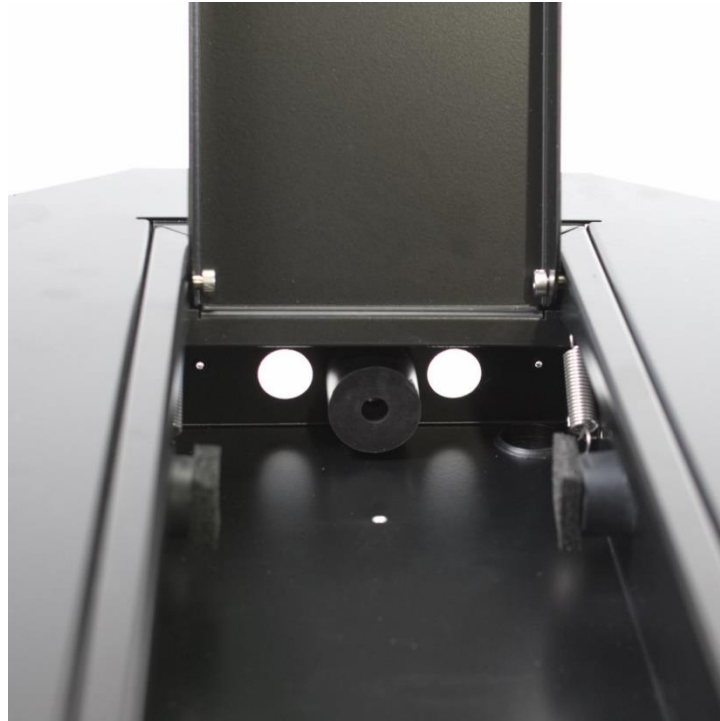
Installation

The taillight kit comes with the Cargo Rack Dual Battery mount with socket, two M6 screws, nuts and washers, taillight and charging cable as shown below.

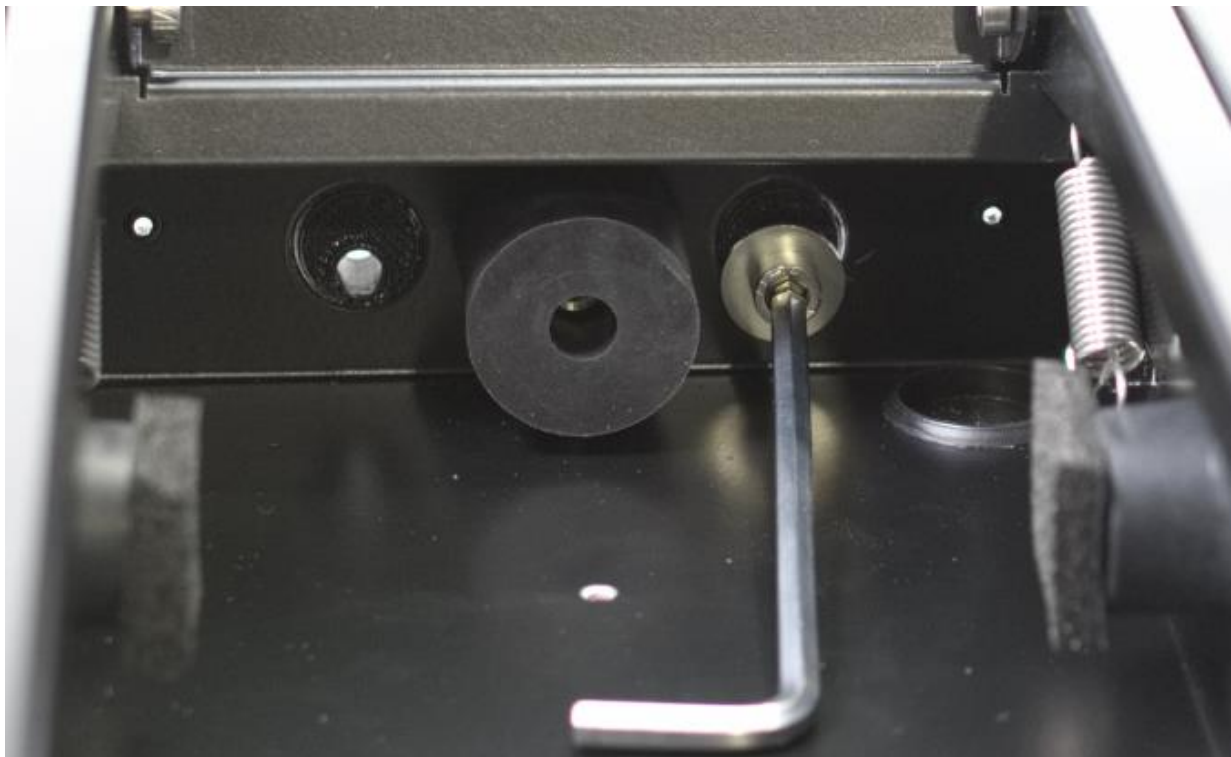


First, open the rear battery case; disconnect and remove the rear battery. Looking under the hinge of the battery case door you'll see two hole-plugs. Use a pair of needle nose pliers to remove the hole-plugs. Discard the plugs when removed.





From the back of the cargo rack, insert the taillight mount so that the two circular bosses align with the two unplugged holes. Install the first screw and washer from the inside of the battery case through the hole in one of the bosses. Secure the screw with the end of the 5mm hex wrench, then finger tighten the nut on the outside of the cargo rack. The washer and hole in the mount are offset from the main hole to allow the washer to grip the inside of the case.



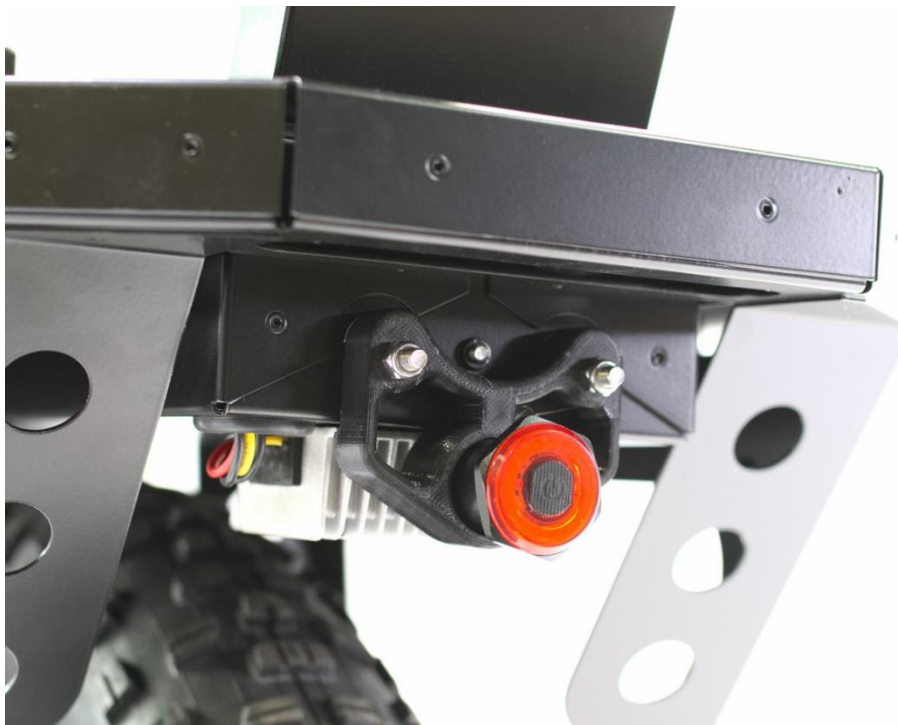
Use the 10mm socket wrench to secure the nut from the outside and stabilize the mount against the back of the cargo rack. While securing the screw with the hex wrench, tighten the nut using the socket wrench.



Repeat the installation of the second screw, washer and nut. The installed mount should appear the same as below.



Screw the taillight into the mount socket.



Charging the taillight

The taillight is not powered from the Rungu battery, so it occasionally needs to be recharged with the charging cable shown below.



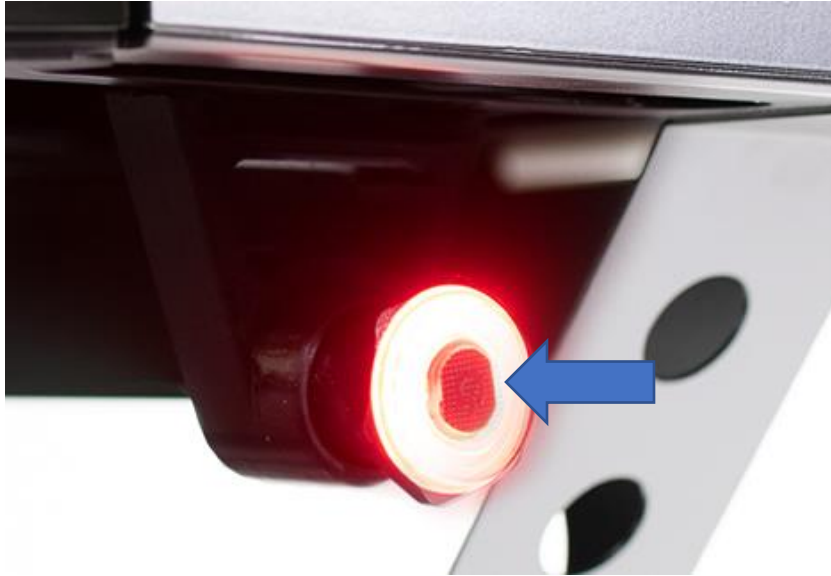
To recharge the taillight, unscrew the taillight from the mount. Install the charging cable into the back of the taillight. Connect the other end to a USB charger port as you would use for your cell phone. You can also charge it from the battery on Rungu Dualie integrated battery units, or from the port under the display on all Rungu Dualies (though the Rungu Dualie must be turned on for the port to work).





Operating the taillight

The Rungu Taillight by GUB has 5 operating modes all accessed by pressing the button power button in the center of the taillight.



Turning the taillight on and off

Press the power button in the center of the taillight to turn on the taillight. Press and hold down the power button for three seconds to turn off the taillight. The taillight automatically turns off if it doesn't sense motion after a few minutes.

Taillight operating modes

There are five different taillight settings and each one can sense braking to illuminate brighter just like a brake light in a car. Each time you press the button in the center of the taillight for one second after turning on the taillight changes the way the taillight operates. After the fifth press of the button, the taillight returns to the default mode. In this way you can cycle through all five modes.

Mode	Button press	Description
Brake light 1	Default/turn on/full cycle	Taillight illuminates at lowest brightness and then gets three times brighter when sensing braking/deceleration
Brake Light 2	One	Taillight illuminates brighter and then gets three times brighter when sensing braking/deceleration
Flashing 1	Two	Taillight flashes approximately once/second – illuminates brighter when sensing braking/deceleration
Flashing 2	Three	Taillight flashes rapidly– illuminates brighter when sensing braking/deceleration
Pulsating	Four	Taillight pulsates – illuminates brighter when sensing braking/deceleration