

RUNGU[®] DUALIE SKID PLATE INSTALLATION



Contents

What's in the Box.....	2
Requirements (What's NOT in the box).....	2
Skid plate mount installation	3
Skid plate installation.....	4
Using Skid plate Mount as Storage	7

What's in the Box

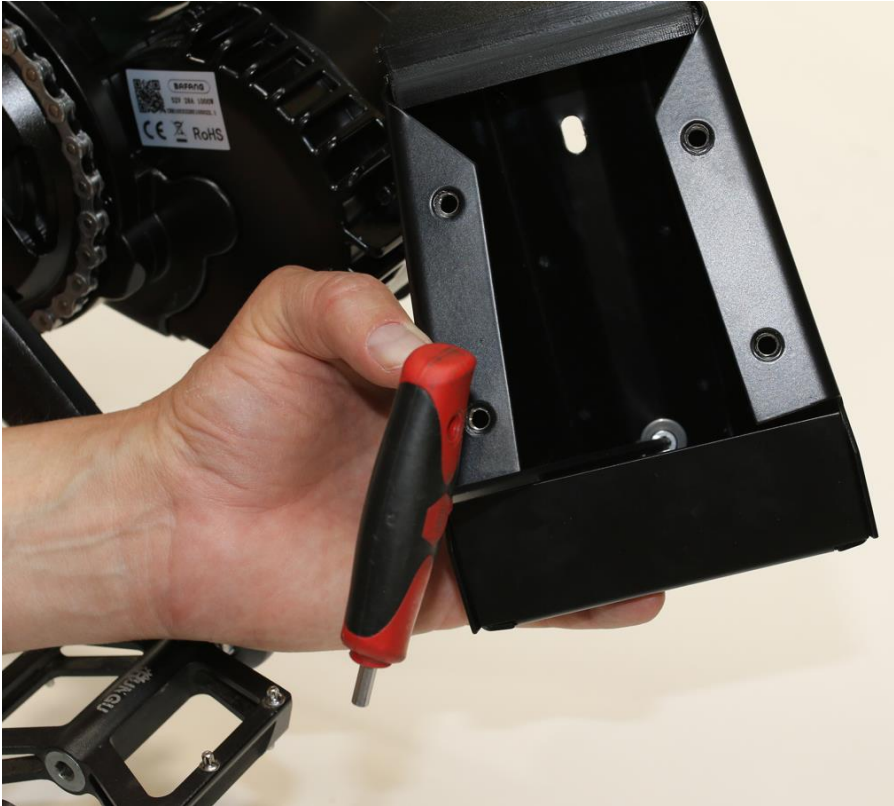
- Skid plate
- Skid plate mount with door
- 2 ea. Screws M5 x 14mm
- 1 ea. Screw M5 x 18mm
- 3 ea. M5 large washers
- 4 ea. Screws M6 x 18mm
- 4 ea. M6 large washers
- Printed installation instructions (these)

Requirements (What's NOT in the box)

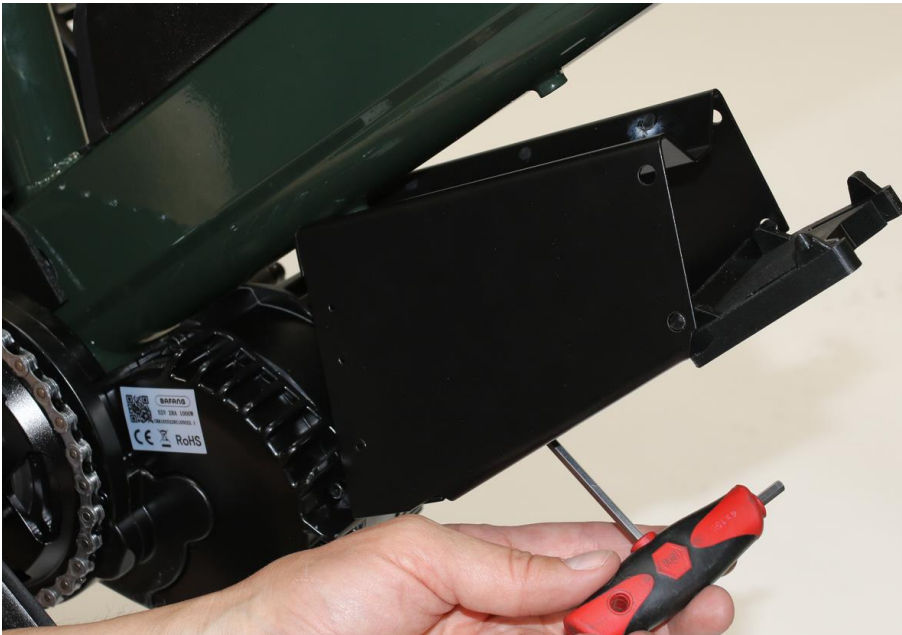
- 4mm long shank "T" handle style hex wrench (preferably without ball end)
- 5mm hex wrench
- Assembly

Skid plate mount installation

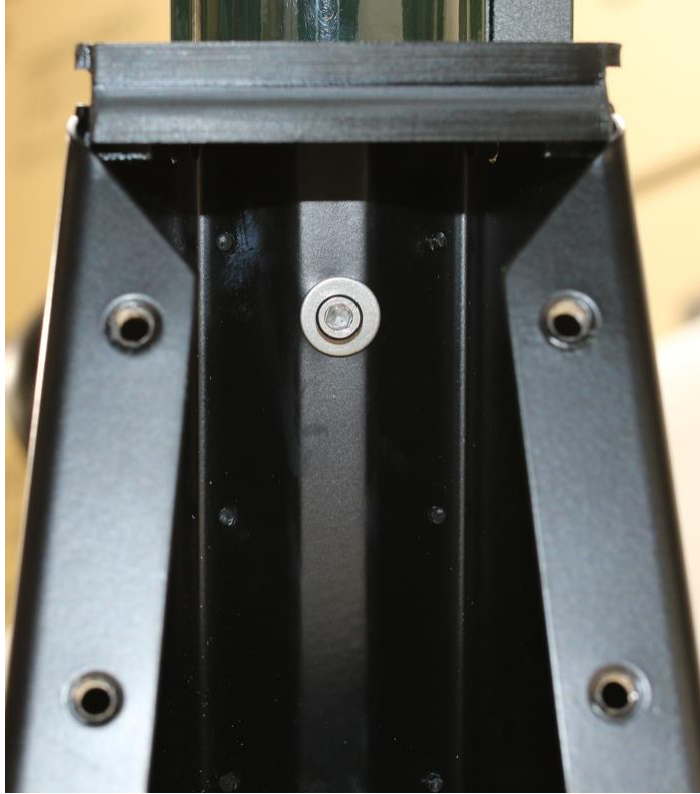
1. Install the skid plate mount first. Insert an M5 x 14mm screw and washer into the bottom slot of the skid plate mount and hold it in place with the 4mm hex wrench as shown.



2. Align the skid plate mount so that the wide end is closest to the motor and use the 4 mm hex wrench to guide and fasten the screw into the lower threaded boss hand tight.



3. Use the second M5 x 14mm screw and washer to fasten the mount through the upper slot in the skid plate mount to the upper boss. Fully tighten.

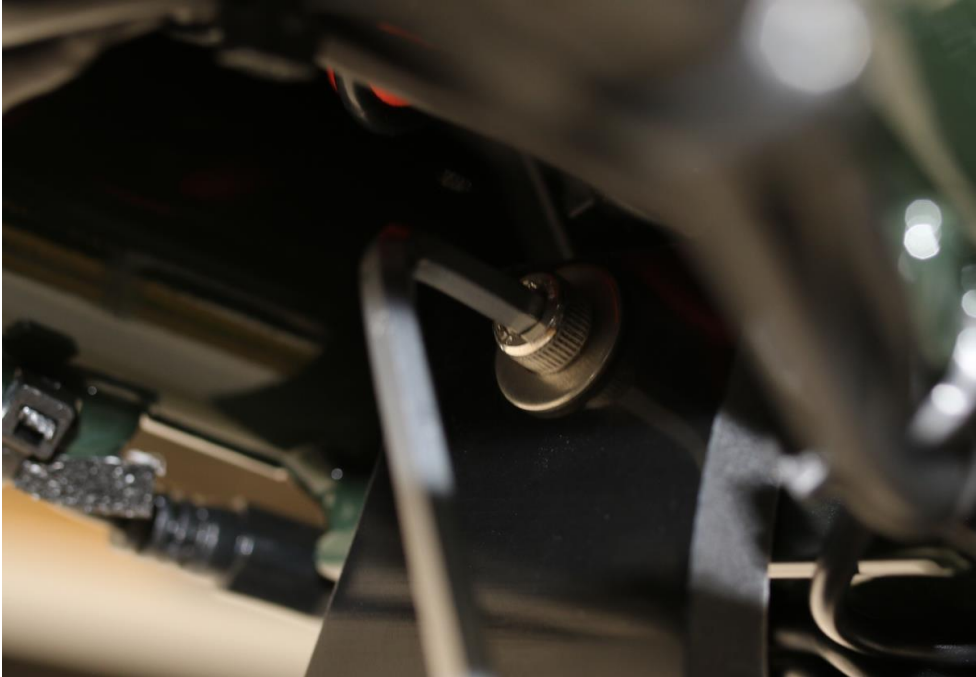


Skid plate installation

1. Locate the M5 threaded hole under the wiring cover. You will find the fastening location under the bike under the wiring cover behind the pedals.



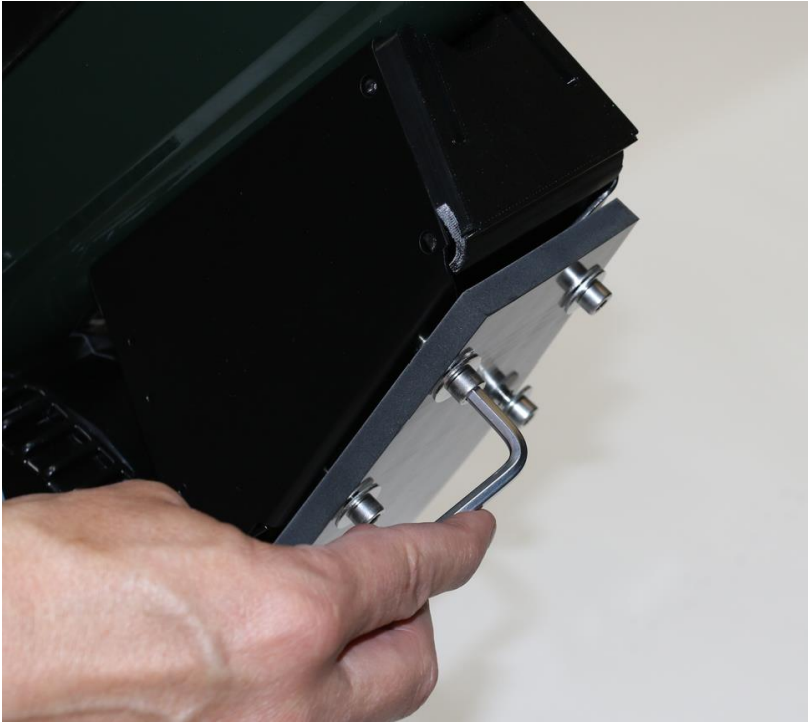
2. Align the hole in the rear of the skid plate with the threaded hole and use the 4mm hex wrench to loosely fasten the skid plate with the M5 x 18mm screw and washer.



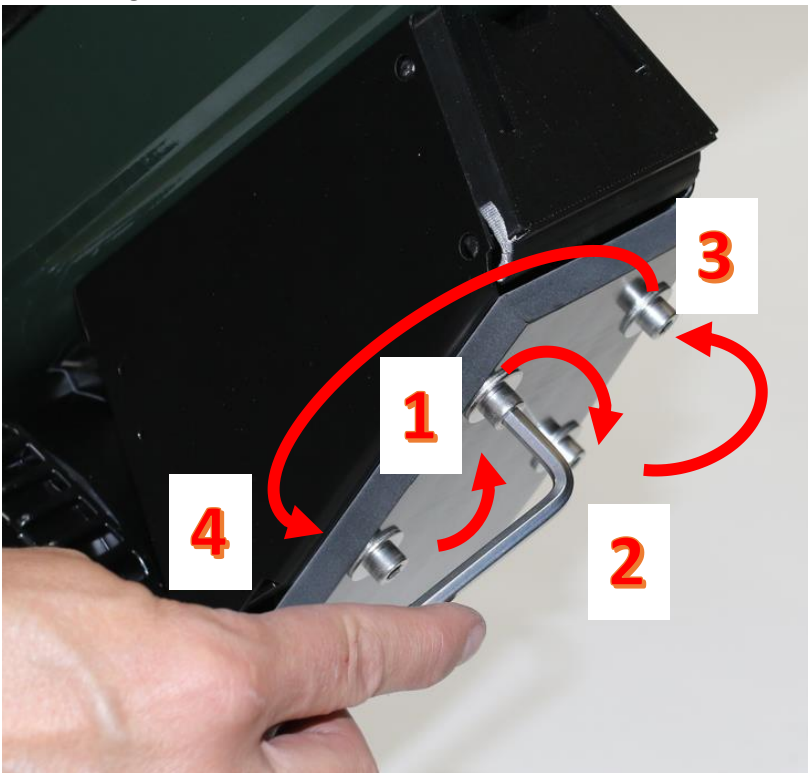
3. Align the front of the skid plate with one of the two threaded holes at the bottom of the skid plate mount. Insert an M6 x 18mm screw and washer and finger tighten (or use 6mm hex wrench).



- Repeat the prior step for the three remaining holes.



- In a crossing fashion, progressively tighten each M6 screw against the skid plate until fully fastened against mount.



- Fully tighten the m5x18mm screw under the wiring cover.

Using skid plate mount as storage

To open access storage – squeeze tabs on either side of the door and open the door away from skid plate mount.



Note – Storage space is not watertight and has large gaps; store items in ziplock bags before placing in storage.



Close the door by rotating the door in place and squeezing tabs on both sides to latch door in place.

