

# RUNGU® CARGO TRAILER

## OWNER MANUAL

**CAUTION: READ MANUAL BEFORE ASSEMBLY AND USE**

**WARNING: DO NOT USE THE CARGO TRAILER IF YOU HAVE NOT READ AND UNDERSTOOD THE CONTENTS OF THIS MANUAL. FAILURE TO DO SO MAY RESULT IN SERIOUS INJURY OR DEATH.**



## Contents

- Single Wheel Trailer Parts Identification ..... 2
- Trailer Hitch Skewer Parts Identification..... 3
- Tools required ..... 3
- Cargo Rack Assembly instructions ..... 4
- Rungu Trailer Hitch Skewer Assembly instructions..... 7
- Attaching the trailer to the bike ..... 10
- Decoupling the trailer from the bike ..... 12
- Attaching the trailer to bikes other than Rungu Dualie..... 12
- Cautions and Warnings..... 13
- Technical Specifications ..... 13

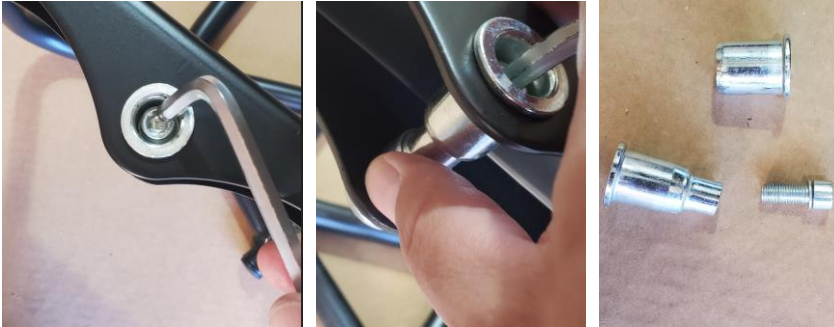
# Cargo Trailer Parts Identification



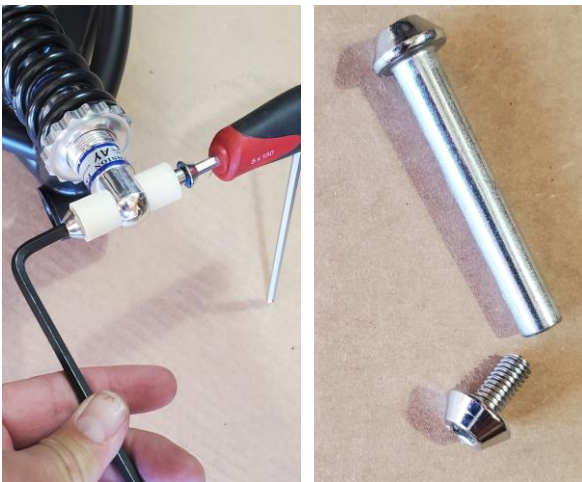


## Cargo Trailer Assembly instructions

1. Use the 6 mm Hex Wrench to remove the Wheel and Rack Frame Pivot from the Cargo Frame and put the components aside.



2. Use the two 5 mm Hex Wrenches to remove the sex bolt from the Wheel and Rack Frame shock absorber. Put the two pieces aside.



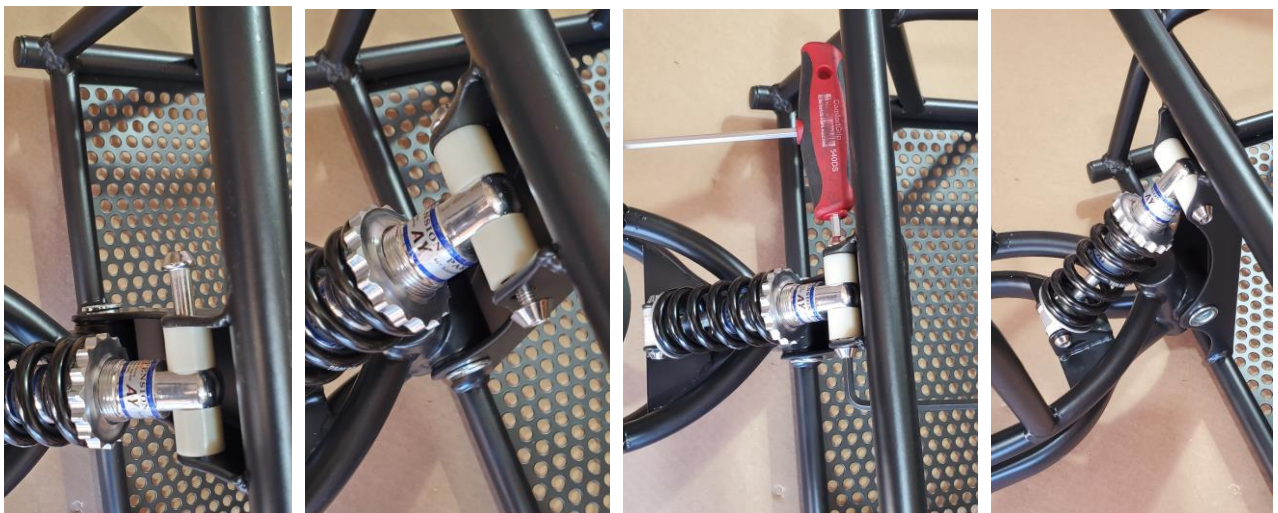
3. Install the Wheel and rack Frame into the bracket on the back of the Cargo Frame so that the pivot aligns as shown below – insert the pivot barrels into either side of the bracket to hold the Wheel and rack Frame in place with the Cargo frame.



4. Insert the screw from step 1 into the shorter of the two barrels. Use the 6 mm Hex Wrench to engage the threads in the longer barrel. Use the 10 mm Hex Wrench in the longer barrel to secure the barrel. Tighten the screw with the 6 mm Hex Wrench.



5. Align the upper pivot of the shock absorber with the holes in the bracket. Insert the sex bolt nut through the bracket and the upper pivot. Use the two 5 mm hex wrenches to tighten the sex bolt in place.



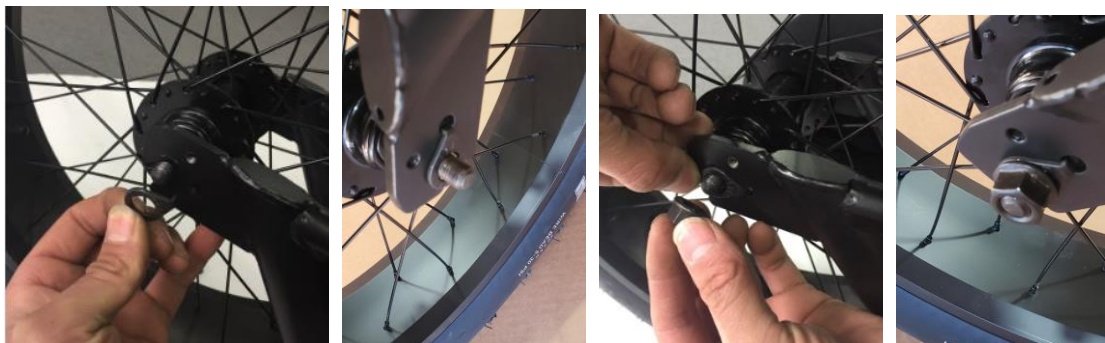
6. Inflate the rear wheel to 30 psi.
7. Remove the nuts and alignment washers on either side of the rear wheel.



- 8. Install the rear wheel into the dropouts of the Wheel and Rack frame.



- 9. Mount the alignment washers on either side so that the alignment tab fits into the hole without threads. Thread each nut on to either side of the Wheel and Rack Frame.



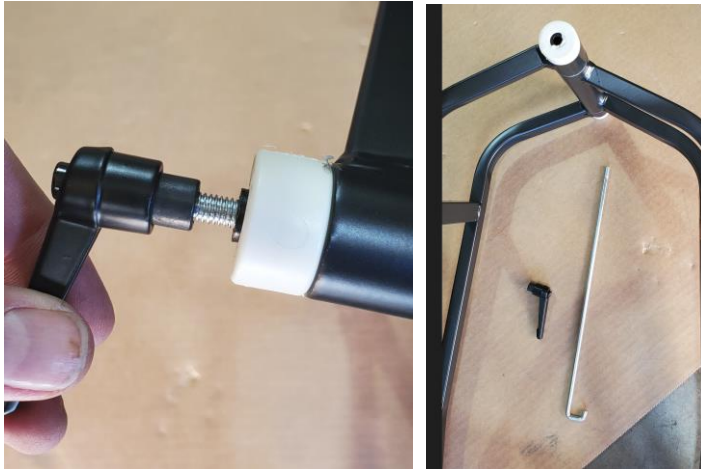
- 10. Use 15 mm socket wrenches, box wrenches or adjustable wrenches to tighten both nuts simultaneously.



- 11. Lower the kickstand on the Cargo Frame to elevate the assembly.



12. Unscrew the tightening lever from the mandrel on the Front Fork. Remove the mandrel and place aside.



13. Align the Front Fork pivot between the two tabs on the front of the Cargo Frame. Make sure that dropouts on the Front Fork face downward. Insert the mandrel from the bottom tab up through the top tab. Align the mandrel hook end with notch behind the tab. While holding the mandrel in place, secure the top end with the tightening lever.



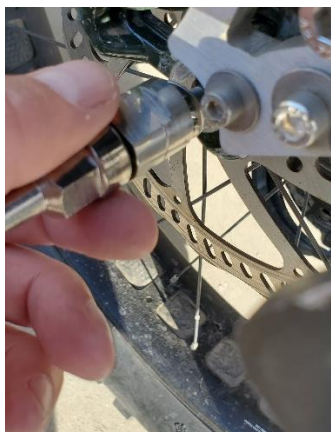
## Cargo Trailer Hitch Skewer Assembly instructions

**WARNING – DO NOT TIGHTEN THE SKEWER BEYOND THE INSTRUCTIONS IN THIS GUIDE. DOING SO MAY CAUSE SKEWER TO SEPARATE/BREAK AND FREE REAR WHEEL FROM FRAME, WHICH MAY CAUSE AN ACCIDENT LEADING TO RIDER INJURY OR DEATH.**

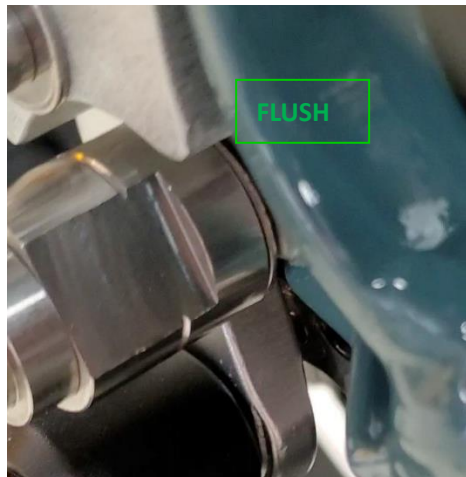
1. First, make sure gear shifter is in highest gear (smallest cog).
2. Open the quick release lever and unscrew the Quick Release nut (opposite side from lever). Remove the conical spring and Quick release nut and put to one side.



3. Insert the skewer with the M10 lock washer from one side of the bike so that the threaded end of the skewer is accessible on the other side.



4. Before continuing make sure that the M10 lock washer is flush against the frame dropout and not caught in the dropout.





5. Place a few drops of loc-tite onto the exposed threads of the skewer.



6. Place the M10 lock washer onto the other Hitch Spindle Nut and thread the BOB nut onto the skewer.



7. With the wheel aligned in the dropout, finger tighten the Hitch Spindle Nut onto the skewer. Make sure that the M10 lock washer is flush against the frame dropout and not caught in the dropout as shown earlier.
8. Using an adjustable wrench (or second 15mm wrench) on one side and the 15mm wrench on the other, tighten the Hitch Spindle Nut one and a half (1.5) turns and no more. The Hitch skewer is precision machined, which makes it easy to over-tighten and snap the skewer in two pieces.



***WARNING – DO NOT TIGHTEN THE SKEWER BEYOND ONE AND A HALF TURNS PAST FINGER TIGHT. DOING SO MAY CAUSE SKEWER TO SEPARATE AND FREE REAR WHEEL FROM FRAME, WHICH MAY CAUSE AN ACCIDENT LEADING TO RIDER INJURY OR DEATH.***

**NOTE – broken Rungu Skewers are not covered by Rungu Warranty as described in Rungu Sales Terms and Conditions.**

**NOTE - In case of a flat, cassette or rear rotor replacement, use an adjustable wrench to unscrew one end of the Rungu Skewer and draw the other end and skewer through the rear hub. Then remove the wheel for flat repair.**

## Attaching the trailer to the bike

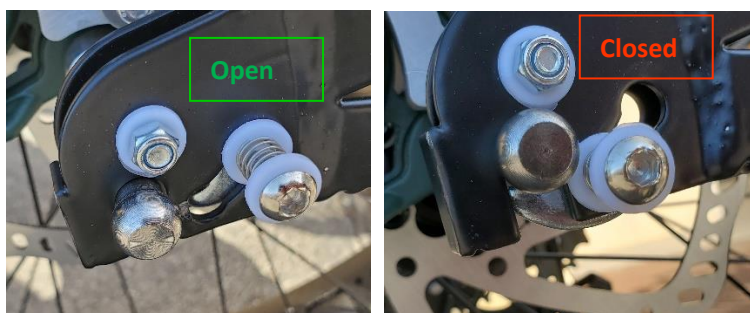
1. Lower the kickstand to stabilize the trailer.



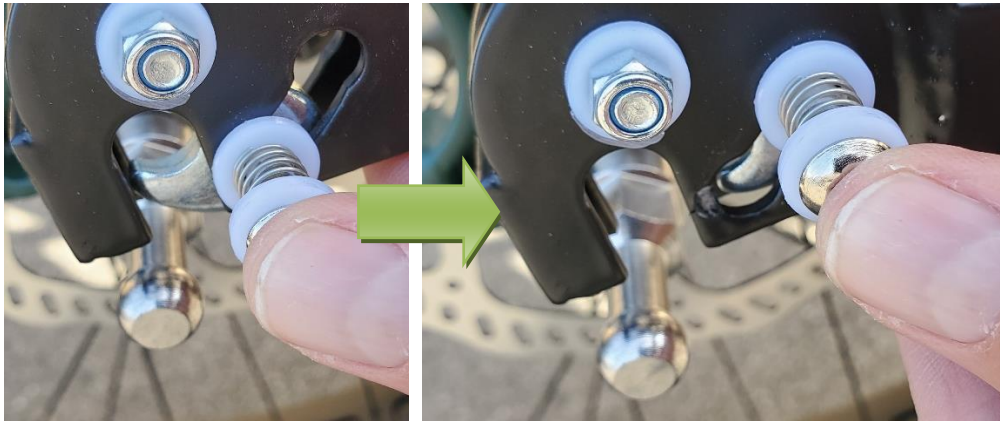
2. Align the Front Fork of the trailer over the spindle nuts.



3. Make sure that the Front Fork Dropouts are free to mount on each side by releasing locking mechanism to open the Front Fork Dropouts.



- To open the locking mechanism, press the lock release button and pivot the lock out of the way of the dropout.



- Position the fork dropouts over the spindles on either side of the rear wheel, raise the kickstand and lower the dropouts onto the Rungu Hitch.



- Press the lock release button and pivot the lock down so that it captures the spindle on each side.



- Insert the safety pin into the hole vacated by the lock release button and capture the end of the safety pin with the clip provided.



**WARNING: NEGLECTING THE SAFETY PIN ON EACH SIDE OF THE FRONT FORK OF THE TRAILER AFTER ATTACHING TO THE BIKE MAY RESULT IN THE TRAILER DECOUPLING FROM THE BIKE WHILE RIDING. DECOUPLING MAY RESULT IN AN ACCIDENT LEADING TO RIDER INJURY OR DEATH.**

## Decoupling the trailer from the bike

1. the bike by applying the parking brake on a level surface or securing it in another way.
2. Remove the safety pin from each side of the trailer Front Fork.
3. Press the lock release button and pivot the lock out of the way of the dropout.
4. Lower the kickstand to lift the Front Fork off the spindles on the Rungu Hitch Axle and rest the trailer on its kickstand.

## Attaching the trailer to bikes other than Rungu Dualie

If you plan to use the trailer with a bike other than Rungu Dualie, remove the spindles from either side of the Rungu Trailer hitch and mount them on to the axle of the target bike. The spindles are threaded 3/8 x 36 TPI, which is the standard for threaded axles.

- If the target bike uses a threaded axle, attach the spindles to the exposed threads on either side of the axle.
- If the target bike uses a Quick Release skewer with a different length than Rungu Dualie, purchase a BOB compatible quick release skewer and a 3/8 x 36TPI threading die with wrench. Remove the bobbins from the ends of the BOB compatible axle and thread the exposed shafts with the die. Fasten the spindles to the threaded ends.
- If the target bike uses a Thru-Hole axle, purchase a BOB compatible axle and a 3/8 x 36TPI threading die with wrench. Remove the bobbins from the ends of the BOB compatible axle and thread the exposed shafts with the die. Fasten the spindles to the threaded ends.

## Cautions and Warnings

**WARNING: INSPECT THE RINGU HITCH AND CONNECTION OF THE TRAILER FREQUENTLY. A BROKEN SKEWER OR INCOMPLETE ATTACHMENT OF THE TRAILER CAN RESULT IN SERIOUS INJURY OR DEATH TO THE RIDER.**

**WARNING: THE TRAILER IS INTENDED TO CARRY CARGO ONLY. DO NOT USE THE TRAILER FOR HUMAN OR ANIMAL PASSENGERS. DOING SO MAY RESULT IN DEATH OR SERIOUS INJURY TO THE RIDER AND PASSENGER.**

**CAUTION: ALWAYS WEAR A HELMET WHEN RIDING**

**CAUTION: CHECK TRAILER FASTENERS PRIOR TO HAULING CARGO TO MAKE SURE TRAILER IS READY FOR SERVICE.**

**WARNING: ADDITIONAL LOAD ON YOUR TRAILER INCREASES BRAKING DISTANCE AND AFFECTS THE CONTROL OF YOUR BIKE. BE SURE TO BRAKE EARLY AND ADJUST YOUR RIDING STYLE ACCORDINGLY WHEN CARRYING LOAD**

**WARNING: DO NOT EXCEED 25 MPH OR 40 KPH WHEN THE TRAILER IS LOADED. DOING SO MAY CAUSE LOSS OF CONTROL RESULTING IN SERIOUS INJURY OR DEATH.**

**CAUTION: MAINTAIN PROPER TIRE INFLATION PRESSURE.**

**CAUTION: DO NOT ALTER THE DESIGN OR FABRICATION OF THE TRAILER AS IT MAY REDUCE ITS CARRYING CAPABILITY.**

**CAUTION: CHECK BRAKES BEFORE EVERY JOURNEY WITH THE TRAILER.**

**CAUTION: MAKE SURE LOAD IS SECURED TO TRAILER BEFORE RIDING.**

## Technical Specifications

Maximum load: 100 lbs/45 kg

Maximum speed: 25 mph/40 kph

Unloaded weight: 37 lbs/17 kg

Tire inflation pressure: 15-30 P.S.I.

Trailer Cargo Tray internal dimensions: 29.5”L x 16”W x 11”D (75cmL x 40cmW x 27cmD)