

RUNGU® DEER CART

OWNER MANUAL

CAUTION: READ MANUAL BEFORE ASSEMBLY AND USE

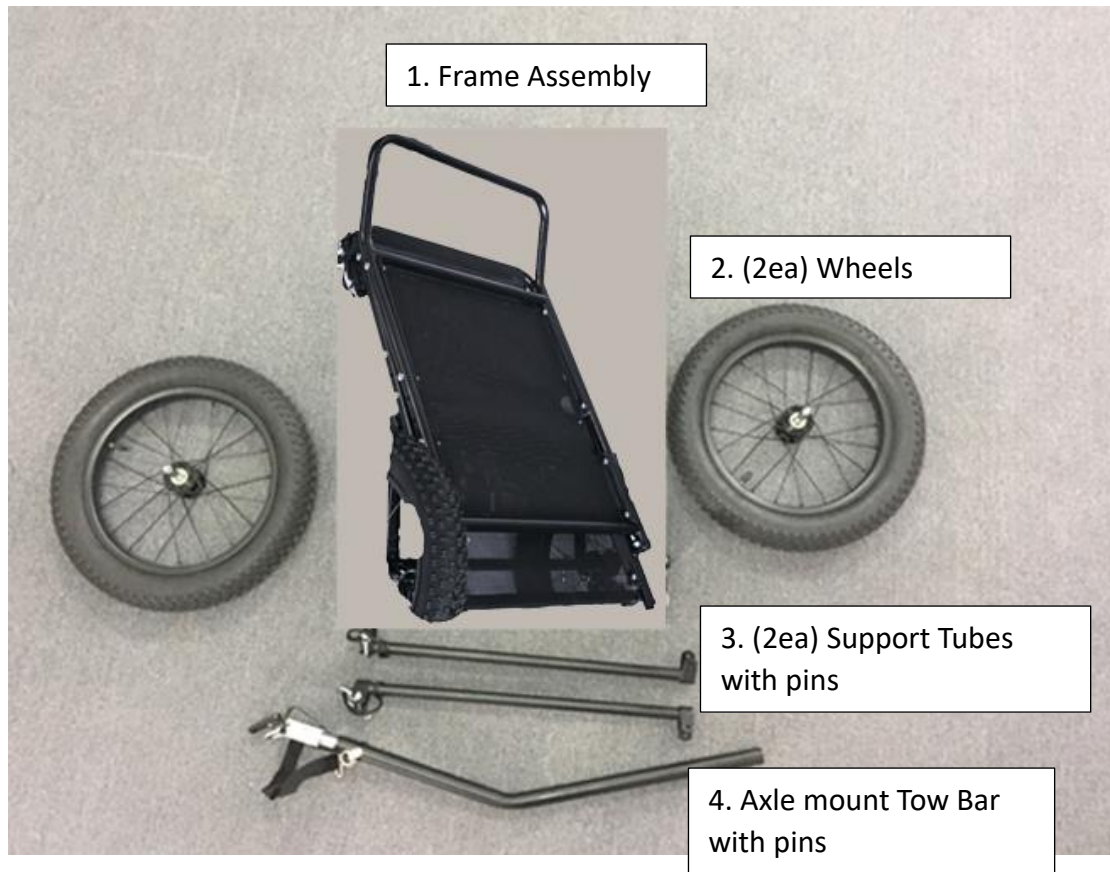
WARNING: DO NOT USE THE DEER CART IF YOU HAVE NOT READ AND UNDERSTOOD THE CONTENTS OF THIS MANUAL. FAILURE TO DO SO MAY RESULT IN SERIOUS INJURY OR DEATH.



Contents

Dual Wheel Deer Cart Parts Identification.....	3
Deer Cart Assembly instructions.....	4
Installing the hitch onto a Rungu Dualie with Cargo Rack.....	7
Installing the hitch onto a Rungu Dualie without a Cargo Rack.....	10
Hitching the Deer Cart	13
Decoupling the deer cart from the bike.....	14
Attaching the Deer Cart to bikes other than Rungu Dualie	15
Cautions and Warnings	16
Technical Specifications	16

Dual Wheel Deer Cart Parts Identification



Deer Cart hitch, M8x35 bolt, 3/8" washer, M8 Star washer



2nd star washer and M8 Standoff



Cargo Rack Mount with 2xM5x18 bolts, 2xm5 washers, 1x M6x30TL bolt and 1x M6 washer.

Loctite thread locker



Deer Cart Assembly instructions

1. Mount each wheel into the axle shaft on each side of the frame assembly near the middle on the bottom of the frame assembly. Not shown is a release peg under the frame assembly – this peg “clicks” when the wheel is fully inserted

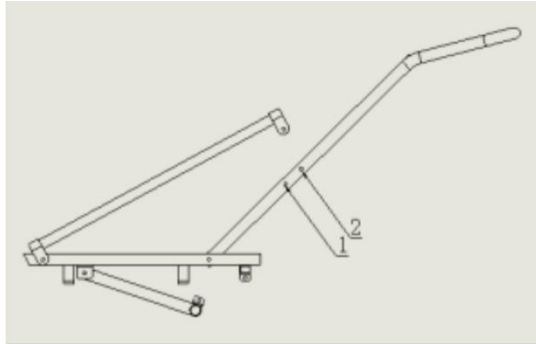
CAUTION: MAKE SURE WHEEL AXLE PINS ARE FULLY ENGAGED IN FRAME ASSEMBLY.



2. Inflate tires to 30psi.
3. Unfold the frame assembly. Mount one end of the support tube onto the frame tube above the rear wheel. Use the quick release pin as shown below to anchor the front of each tube to the frame assembly as shown below.

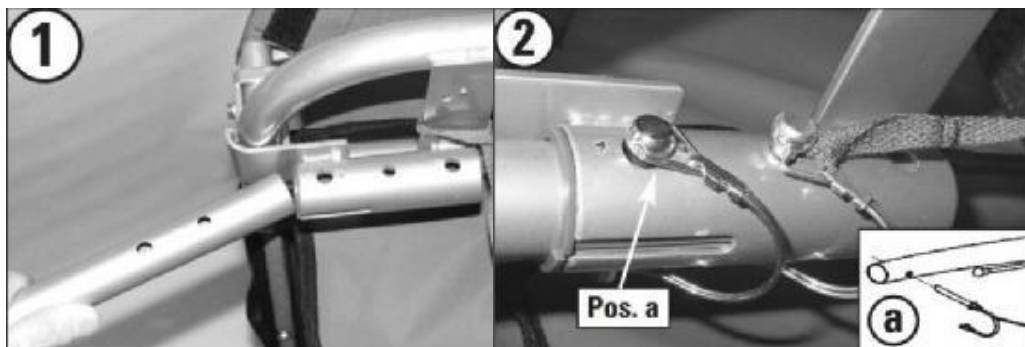


- Pin the other end of each support tube to the back of the Deer Cart using one of the two holes provided in the frame assembly (image below). Select the hole on the frame assembly based on the load you plan to haul. Use the lower of the two holes for hauling longer loads flat and the upper hole for hauling loads with the back of the Deer Cart at an angle.



- Install the tow bar into the mounting tube on the left side of the frame assembly (forward facing) as in figure 1 below. With the bend in the tow bar facing right, secure the tow bar by placing the untethered pin into the forward alignment hole and the tethered pin in either the rearward alignment hole or the middle alignment hole as shown in figure 2. Secure both pins with the spring clips.

Note: Make sure that both pins are secured; a loose or lost pin can cause you to lose control of the Deer Cart while riding.



Installing the hitch onto a Rungu Dualie with Cargo Rack

Note: though the hitch is designed to mount directly to the axle of the rear wheel, attaching the hitch to the Cargo Rack mount has been shown to provide better durability in practice.

Tools required

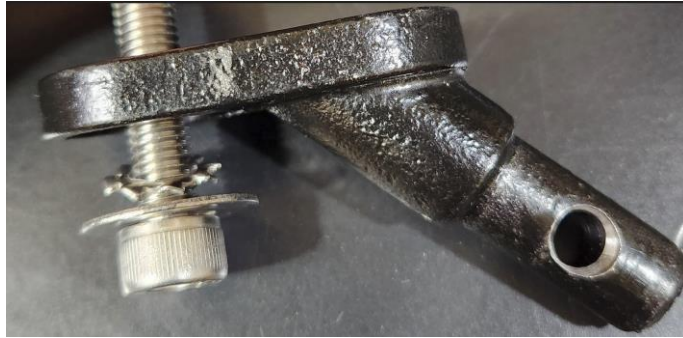
- 6mm hex wrench

Procedure

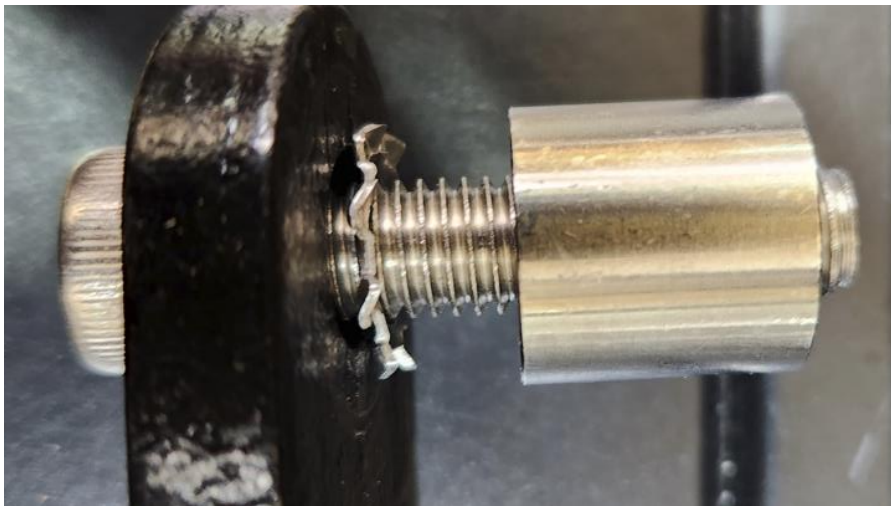
1. Use the 6mm hex wrench to remove the right-side bolt and washer from the Cargo Rack on Rungu Dualie.



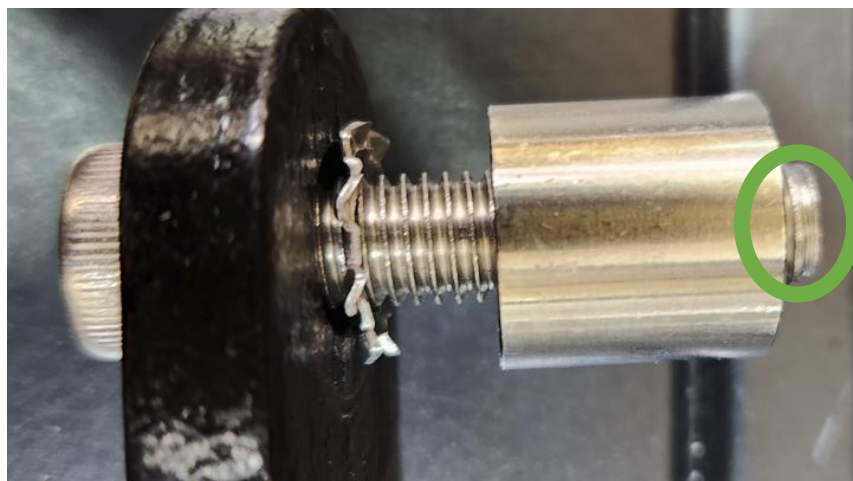
2. Assemble the M8x35 bolt with the 3/8 washer and M8 star washer and hitch as shown below.



3. On the inside of the hitch, assemble another star washer and the M8 standoff.



4. Apply Loc-tite to the end of the screw where circled in the picture below.



5. Thread the hitch assembly into the hole where you removed the bolt in step 1.



6. Fasten the assembly using the M8 hex wrench.



7. Tighten the bolt while orienting the hitch pin horizontally facing the rear of the Rungu Dualie.



Installing the hitch onto a Rungu Dualie without a Cargo Rack

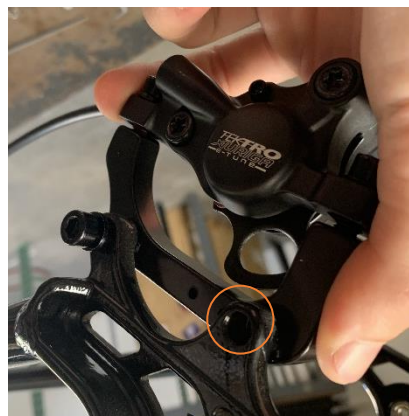
Note: though the hitch is designed to mount directly to the axle of the rear wheel, attaching the hitch to the Cargo Rack mount has been shown to provide better durability in practice.

Tools required

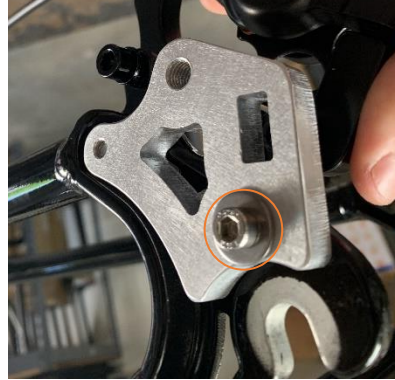
- 6mm hex wrench
- 5mm hex wrench
- 4mm hex wrench

Procedure

1. On the right side of the bike, use a 5mm hex wrench to remove the rear bolt from the brake mount.



2. Place the Cargo Rack Mount onto the frame and apply some loctite to the end of the m5x18 bolt. Then use a 4 mm hex wrench to install the m5x18 bolt and washer to fasten the mount onto the frame from the outside of the frame.



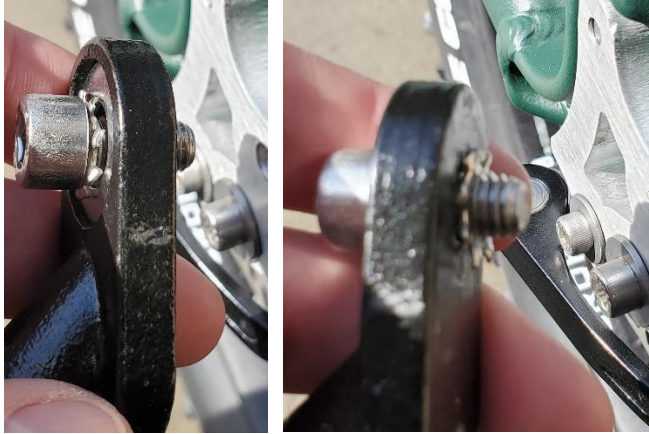
3. Apply some loc-tite to the end of the second m5x18 bolt. Install the second m5x18 bolt and washer from the inside of the frame into the Cargo Rack mount. You may or may not need to remove the rear wheel for this step.



4. Use a 5mm hex wrench to install M6x30 bolt and washer to re-fasten the rear brake where the rear bolt used to be.



5. On the outside of the Cargo Rack Mount, insert the M8x16 bolt with the star washer on the outside of the 3/8" washer on the outside of the hitch and another star washer on the inside of the hitch as shown below to thread the hitch onto the Cargo Rack Mount. Apply some Loctite to the end of the bolt before mounting.



6. While holding the hitch horizontally, use the 6mm Hex Wrench to thread and fully tighten the hitch to the Cargo Rack Mount.



Hitching the Deer Cart

1. Park the Rungu Dualie on a level surface. Use the parking brake to keep it upright.
2. Slide the coupling tube from the Deer Cart onto the hitch and rotate the coupling tube so that it aligns with the hole in the hitch pin.



3. Insert the quick release pin from the top of the coupling tube through to the other side of the coupling tube. Then clip the pin in place.



4. Wrap the safety strap around the right-side seat stay or cargo rack support and fasten it to the tow-bar D-ring using the snap hook. Avoid snagging the brake rotor.



CAUTION: ENSURE SAFETY STRAP CANNOT GET ENTANGLED IN BRAKE ROTOR OR WHEEL SPOKES BEFORE RIDING.

Decoupling the deer cart from the bike

1. Remove the safety pin from the hitch and the safety strap from the frame.
2. Slide the coupling tube off the hitch.

Attaching the Deer Cart to bikes other than Rungu Dualie

If you plan to use the deer cart with a bike other than Rungu Dualie, fasten the hitch to the axle of the bike.

- If the target bike uses a threaded axle and there is enough space remaining on the axle, use an appropriate nut and washer to fasten the hitch to the remaining length of axle. (Usually 3/8" x 36TPI)
- If the target bike uses a threaded axle and there is not enough space remaining on the axle, find an axle extender and then mount the hitch to the axle extender.
- If the target bike uses a Quick Release skewer, purchase a Quick Release adapter to replace the nut on the skewer. Fasten the hitch to the adapter.
- If the target bike uses a Thru-Hole axle, purchase a thru-axle adapter such as the BOB axle and fasten the hitch to the adapter.

Cautions and Warnings

CAUTION: CARRY A 6MM HEXWRENCH WITH YOU TO CHECK CONNECTION PINS AND THE HITCH FASTENER PERIODICALLY WHILE HAULING GAME OR YOUR KIT TO MAKE SURE DEER CART IS READY FOR SERVICE. THE LOCTITE MAY NOT PREVENT THE HITCH FROM LOOSENING FROM VIBRATION WHEN RIDING OFF-PAVEMENT.

CAUTION: ENSURE SAFETY STRAPS ARE IN PLACE. FAILURE TO DO SO MAY RESULT IN LOSS OR DAMAGE OF THE DEER CART ITSELF

WARNING: INSPECT THE HITCH, THE M8 BOLT FASTENING THE HITCH, TOW BAR AND QUICK RELEASE FREQUENTLY FOR FIT. LOOSE FITTING COMPONENTS OR IMPROPERLY FASTENED COMPONENT CAN RESULT IN SERIOUS INJURY OR DEATH TO THE RIDER.

WARNING: THE DEER CART IS INTENDED AS A GAME CART AND KIT CARRIAGE ONLY. DO NOT USE THE DEER CART FOR HUMAN PASSENGERS. DOING SO MAY RESULT IN DEATH OR SERIOUS INJURY TO THE RIDER AND PASSENGER.

CAUTION: ALWAYS WEAR A HELMET WHEN RIDING

WARNING: ADDITIONAL LOAD ON YOUR DEER CART INCREASES BRAKING DISTANCE AND AFFECTS THE CONTROL OF YOUR BIKE. BE SURE TO BRAKE EARLY AND ADJUST YOUR RIDING STYLE ACCORDINGLY WHEN CARRYING LOAD

WARNING: DO NOT EXCEED 10 MPH OR 16 KPH WHEN THE DEER CART IS LOADED. DOING SO MAY CAUSE LOSS OF CONTROL RESULTING IN SERIOUS INJURY OR DEATH.

CAUTION: MAINTAIN PROPER TIRE INFLATION PRESSURE

CAUTION: DO NOT ALTER THE DESIGN OR FABRICATION OF THE DEER CART AS IT MAY REDUCE ITS CARRYING CAPABILITY.

Technical Specifications

Maximum load: 220 lbs/100 kg

Maximum speed: 10 mph/16 kph

Unloaded weight: 32 lbs/14.5 kg

Tire inflation pressure: 30-35 P.S.I.

Carrying surface (flat): 48" L x 20" W (121 cm L x 50 cm W)