

# RUNGU® HEAVY-DUTY KICKSTAND INSTALLATION AND USE

---

Rungu Heavy-Duty Kickstand works with Rungu Cargo Racks (Shipped since 2020) to support and restrain Rungu Dualie® products when parking on uneven terrain or with unbalanced loads on the Cargo Rack.

**NOTE: Rungu Heavy-Duty Kickstand requires the Rungu Cargo Rack for mounting to Rungu Dualie Units. The Rungu Dualie Heavy-Duty Kickstand is not compatible with Rungu Dualie units using cargo racks supplied by other vendors and Rungu Dualie units without Cargo Racks.**



## Contents

Installing Heavy Duty Kickstand .....	3
Kit includes .....	3
Tools required .....	3
Installation Procedure.....	4
Left Half of Kickstand Assembly.....	4
Right Half of Kickstand Assembly.....	11
Kickstand foot .....	17
Reinstalling Pannier Mounts .....	28
Using the Heavy-Duty Kickstand .....	33
Cautions, Warnings and Notes.....	33
Deploying the kickstand.....	34
Resetting the kickstand for travel.....	37
Kickstand Specifications.....	38
Other questions .....	38

## Installing Heavy Duty Kickstand

### Kit includes

- Left Half of Kickstand



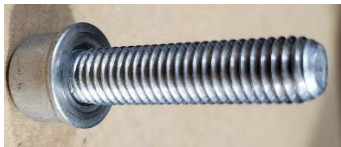
- Right Half of Kickstand



- Kickstand Foot



- 2 ea. M8 x 35 screws and 2 ea. M8 washers



### Tools required

- 5mm hex wrench (not included)
- 6mm hex wrench (not included)

- 2 ea. M6 x 50 screws and 2 ea. M6 split washers



- 2 ea. M6 x 22 screws and 2 ea. M6 washers



- 2 ea. M6 x 18 black oxide screw



- Kickstand wedge



- 2 ea. centering spacers



- 2 ea. M6 standoffs



- Loctite Thread Locker



### Installation Procedure

If your Rungu Dualie has pannier mounts on the Rungu Cargo Rack, use the 6mm wrench to remove the lower pannier mounts on either side and put them aside until the kickstand is installed.

#### Left Half of Kickstand Assembly

- Take the left half of the kickstand and line up the hole for the M8 screw, circled in the first image, with the hole of the cargo rack circled in the second image.



- Use the M8 x 35 screw with a 6mm hex wrench to fasten the left half to the left side of the stand. Be sure to include an M8 washer. Do not fully tighten, this will be done in a later step.



- Rotate the left half of the kickstand to orient as shown.



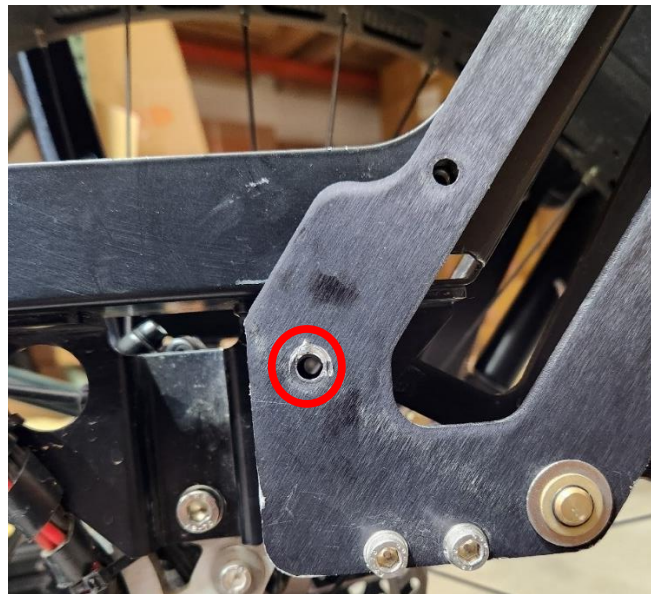
- Insert the M6 standoff into the centering spacer as shown.



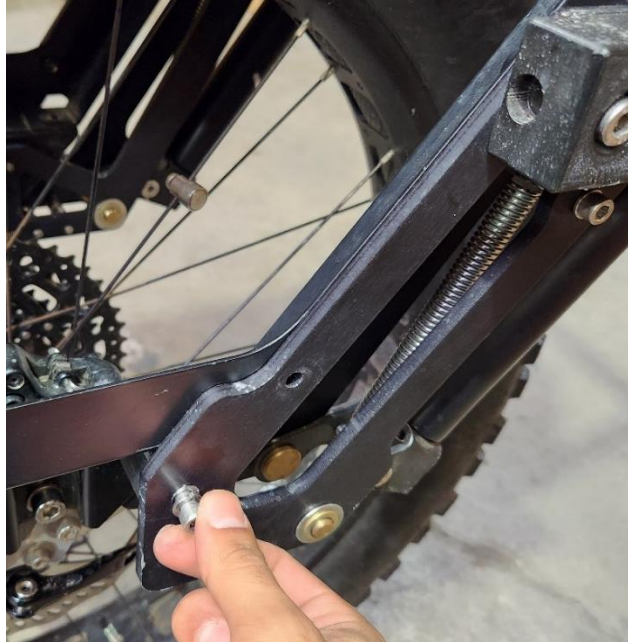
- Insert the centering spacer into the hole of the cargo rack circled below. Ensure that the M6 standoff does not fall out of the centering spacer.



- Hold the centering spacer and M6 standoff in place while rotating the left half of the kickstand. Line up the M6 hole of the kickstand with the M6 standoff/centering spacer as shown in the third image. NOTE: If the left half of the kickstand does not rotate in place check that the standoff is not protruding from the centering spacer.



- Insert the M6 x 50 screw where shown and finger tighten. Be sure to include an M6 split washer as shown.



- Fasten the M6 x 50 screw using a 5mm hex wrench. Do not fully tighten, this will be done in a later step.





- Insert the M6 x 18 black oxide screw where shown and finger tighten.



- Fasten the M6 x 18 black oxide screw using a 5mm hex wrench.



- Fully tighten the M8 x 35 screw using a 6mm hex wrench.



- Fully tighten the M6 x 50 screw using a 5mm hex wrench.

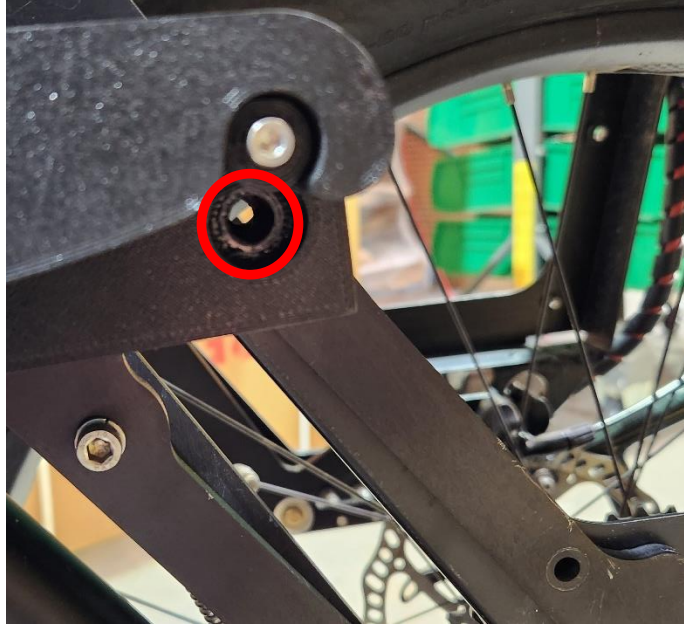


- Fully tighten the M6 x 18 black oxide screw using a 5mm hex wrench.



## Right Half of Kickstand Assembly

- Take the right half of the kickstand and line up the hole for the M8 screw, circled below, with the hole of the cargo rack as was done for the left half.



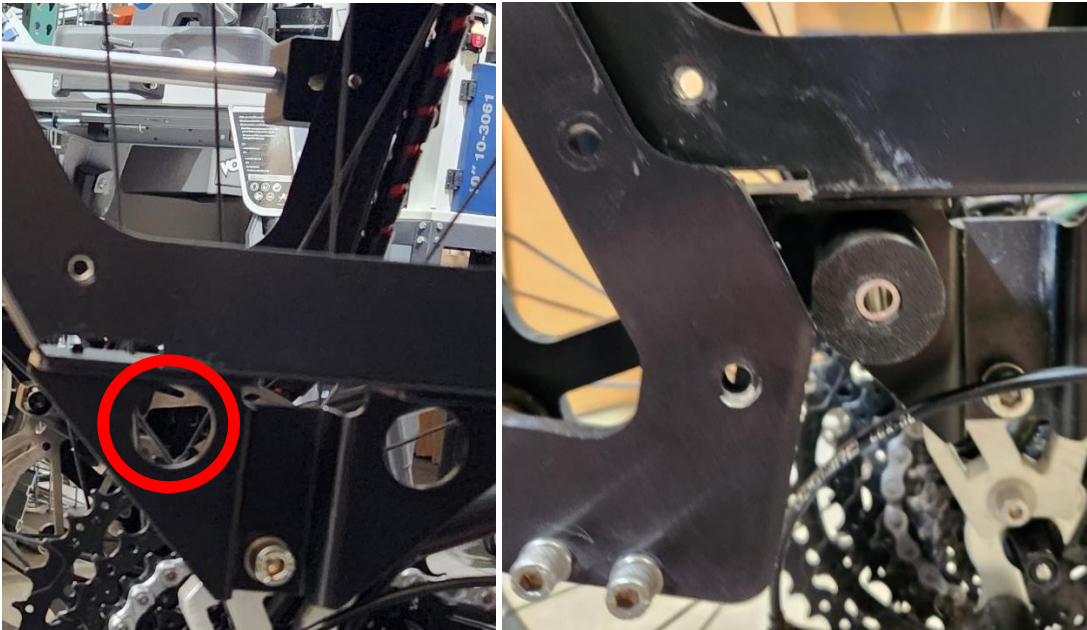
- Fasten the M8 x 35 screw using a 6mm hex wrench. Be sure to include an M8 washer. Do not fully tighten, this will be done in a later step.



- Insert the M6 standoff into the centering spacer as shown.



- Insert the centering spacer into the hole of the cargo rack circled below and orient the right half of the kickstand as shown. Ensure that the M6 standoff does not fall out of the centering spacer.



- Hold the centering spacer and M6 standoff in place while rotating the right half of the kickstand. Line up the M6 hole of the kickstand with the M6 standoff as shown below. NOTE: If the right half of the kickstand does not rotate in place check that the standoff is not protruding from the centering spacer.



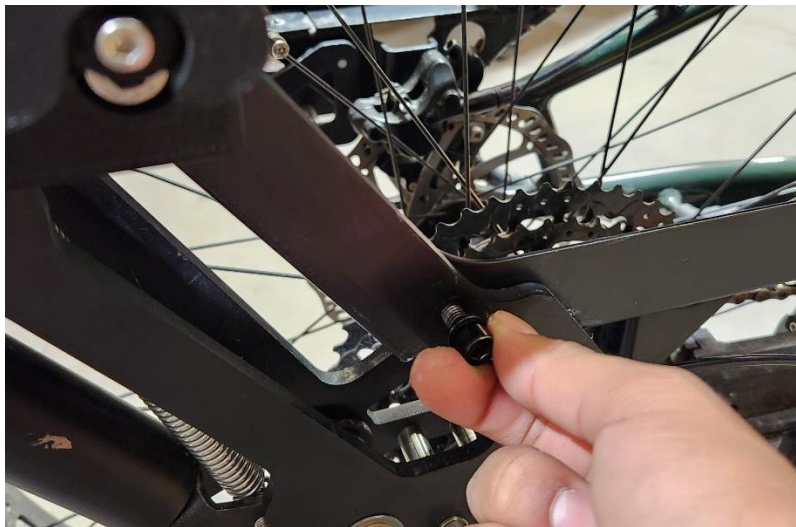
- Insert the M6 x 50 screw where shown and finger tighten. Be sure to include the M6 split washer as shown below.



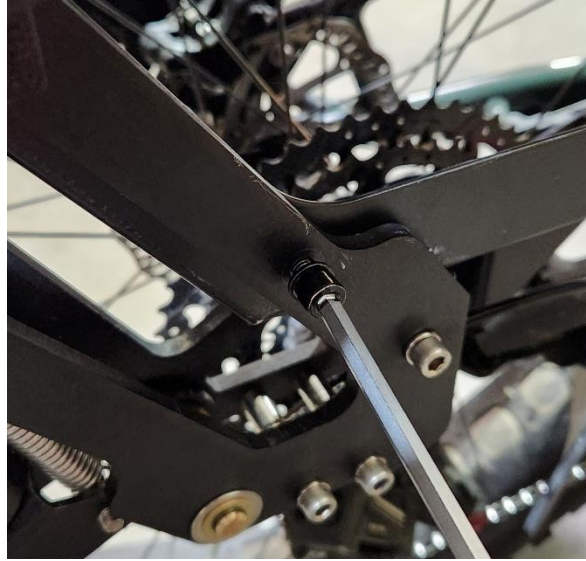
- Fasten the M6 x 50 screw using a 5mm hex wrench. Do not fully tighten, this will be done in a later step.



- Insert the M6 x 18 black oxide screw where shown and finger tighten.



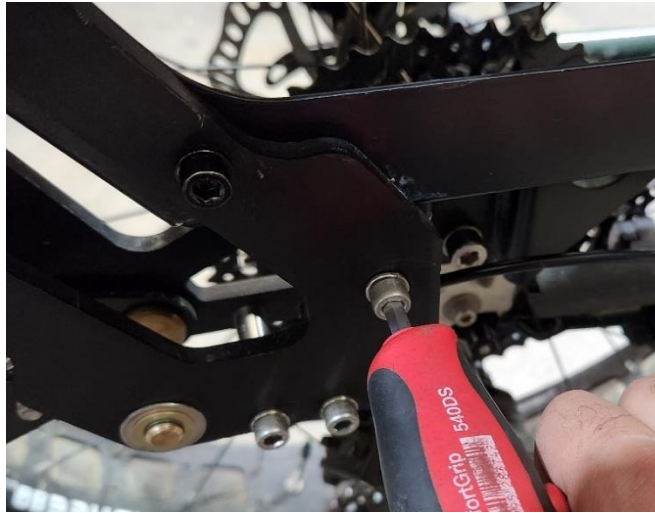
- Fasten the M6 x 18 black oxide screw using a 5mm hex wrench. Do not fully tighten, this will be done in a later step.



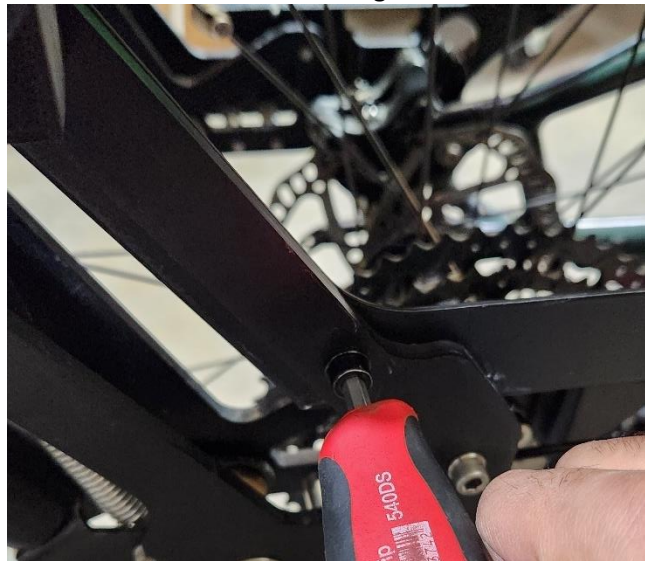
- Fully tighten the M8 x 35 screw using a 6mm hex wrench.



- Fully tighten the M6 x 50 screw using a 5mm hex wrench.



- Fully tighten the M6 x 18 black oxide screw using a 5mm hex wrench.





## Kickstand foot

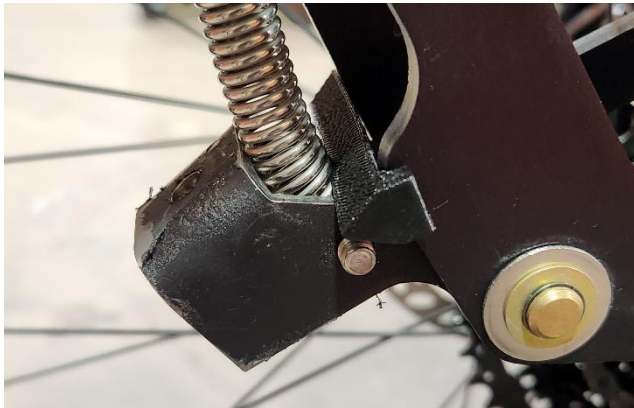
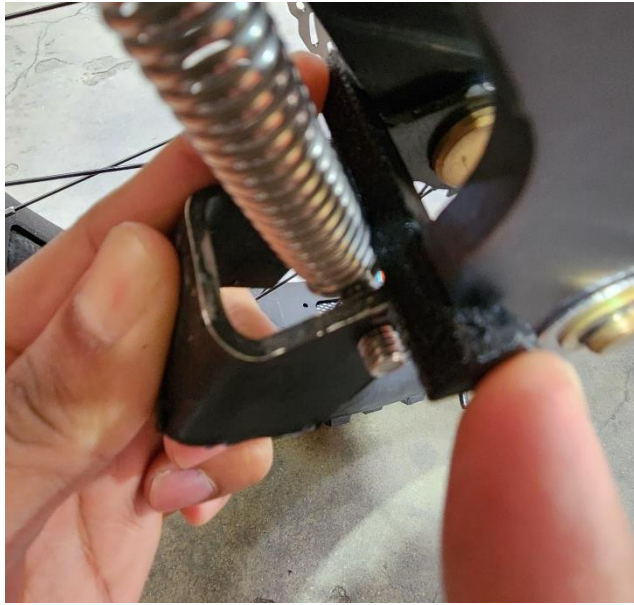
- Apply one or two drops of Loctite thread locker to both M6 x 22 screws and put them aside.
- On the right side, open the kickstand latch by pressing down on the “PRESS TO RELEASE” trigger as shown.



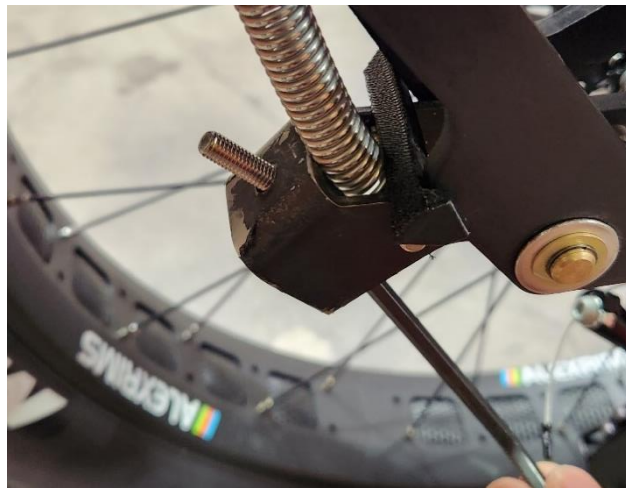
- Rotate the right foot mounting bracket by hand as shown.



- Push down on the foot mounting bracket and Insert the kickstand wedge as shown.



- Inert the M6 x 22 screw with an M6 washer into the foot mounting bracket as shown below. Use a 5mm hex wrench to keep the screw in place. If you have not put a drop of thread locker on the screw threads; do so now.



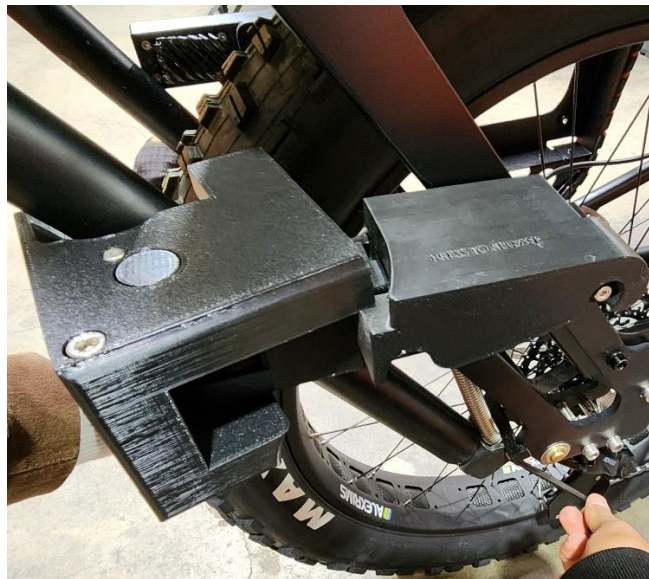
- Position the kickstand foot into the kickstand latch as shown.



- Rotate the kickstand latch into the position shown by pushing upwards on the kickstand foot.



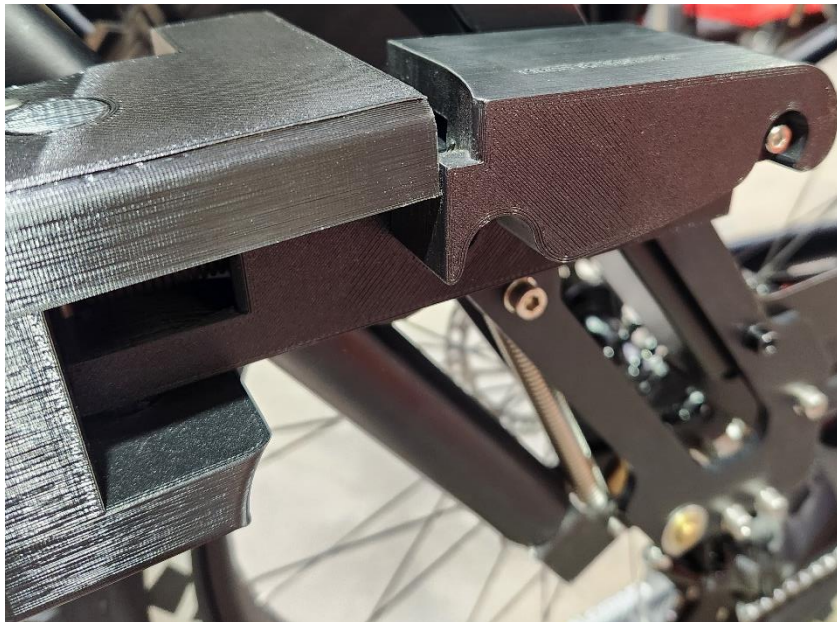
- Insert the M6 x 22 screw into the kickstand foot and fasten using a 5mm hex wrench. Once the screw has been fully tightened, back it off by half a turn. The screw will be fully tightened in a later step.



- Rotate the partially fastened kickstand foot to orient it as shown and remove the kickstand wedge.



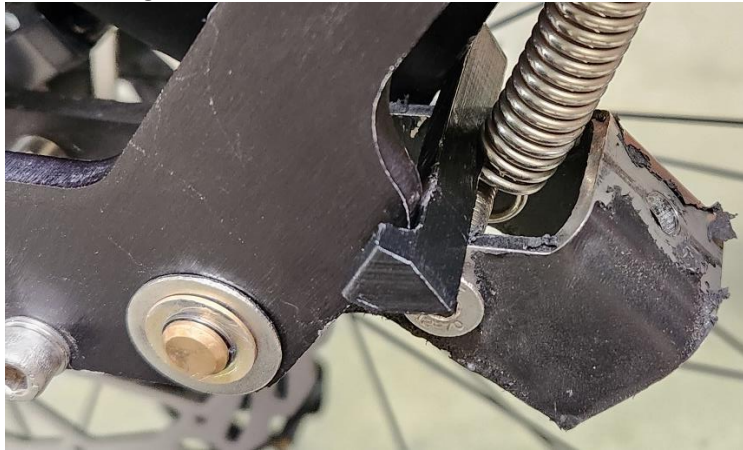
- Re-orient the kickstand foot as shown and ensure that the kickstand latch is in the closed position.



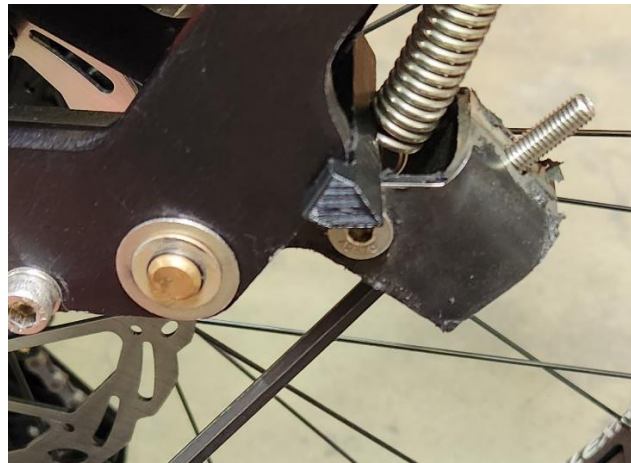
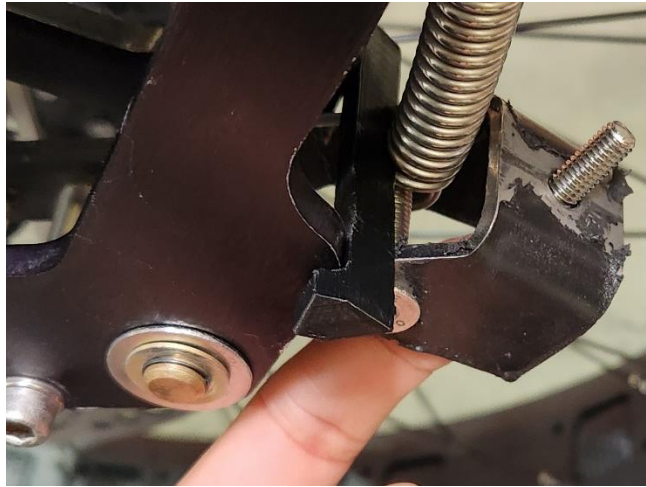
- Rotate the left foot mounting bracket by hand.



- Insert the kickstand wedge as shown.



- Inert the M6 x 22 screw with a M6 washer into the foot mounting bracket as shown below. Use a 5mm hex wrench to keep the screw in place. . If you have not put a drop of thread locker on the screw threads; do so now.





- The kickstand foot is currently oriented as shown in the first image. Rotate the kickstand foot to get it into the position shown in the second image.



- Line up the kickstand foot with the screw.



- Fasten the M6 x 22 screw into the kickstand foot using a 5mm hex wrench. Do not fully tighten, this will be done in a later step.



- Press down on the “PRESS TO RELEASE” trigger as shown below to release the kickstand latch and kickstand foot.



- Orient the kickstand foot as shown and remove the kickstand wedge from the left side.

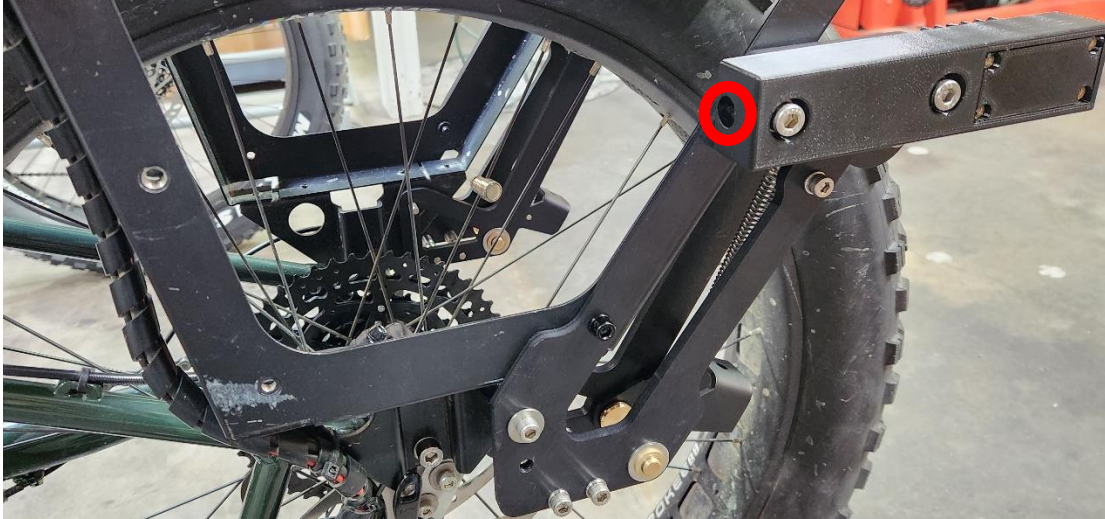


- Fully fasten the kickstand foot to the assembly by tightening both M6 x 22 screws using a 5mm hex wrench.

### Reinstalling Pannier Mounts

If your Rungu Dualie has pannier mounts and you removed the lower mount on each side; follow the directions below to reinstall the mounts using the kickstand instead of the rear mount on each side.

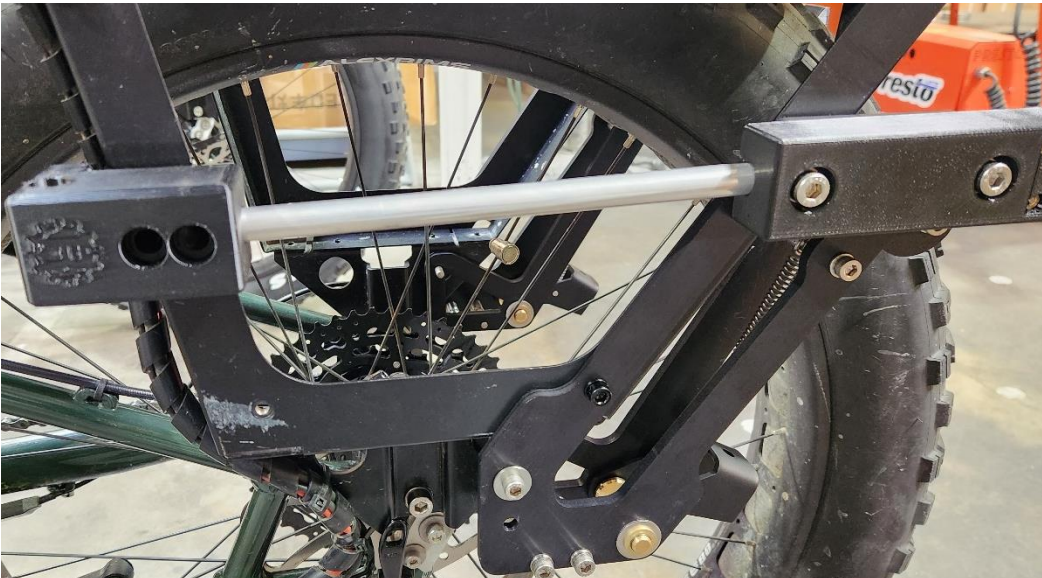
- Insert the lower cargo rack pannier mounting bar into the left half of the kickstand as shown.



- Insert the lower cargo rack pannier mounting bar into the cargo rack pannier mount as shown.



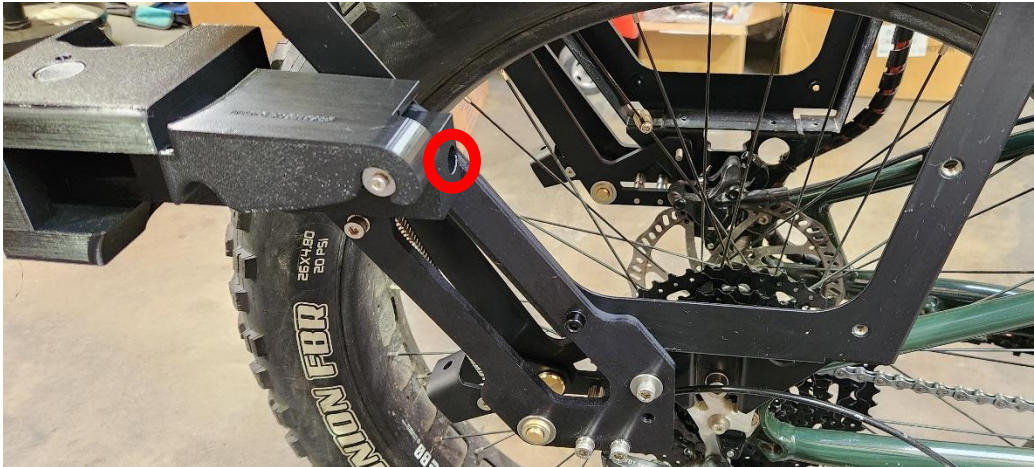
- Rotate the cargo rack pannier mount into position. You may need to rotate the mount to fully embed the bar into the recess of the mount.



- Fasten the M8 x 35 screw using a 6mm hex wrench. Fully tighten the screw.



- Insert the lower cargo rack pannier mounting bar into the right half of the kickstand as shown.



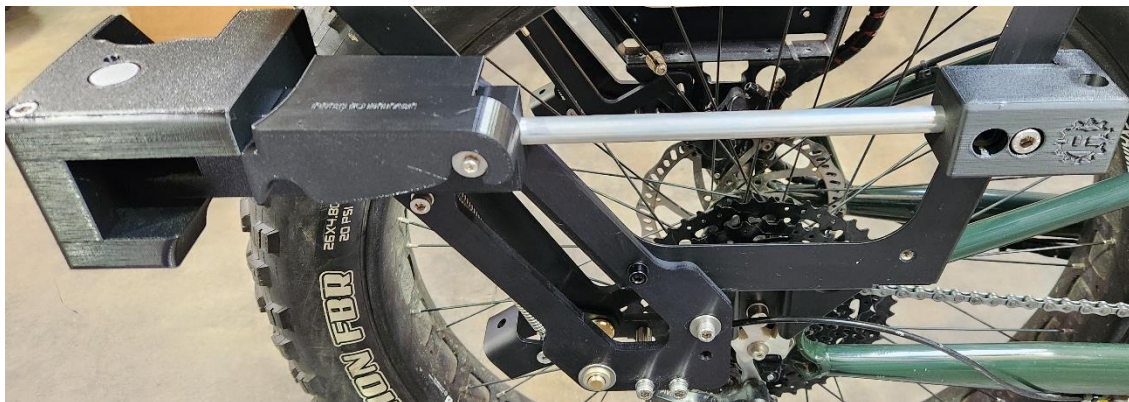
- Insert the lower cargo rack pannier mounting bar into the cargo rack pannier mount



- Rotate the cargo rack pannier mount. You may need to rotate the mount to fully embed the bar into the recess of the mount.



- Fasten the M8 x 35 screw using a 6mm hex wrench. Fully tighten the screw.





## Using the Heavy-Duty Kickstand

The Heavy-Duty Kickstand is designed to support up to 350 lbs. of weight stationary weight on flat ground. It is easy to deploy and retracts automatically into a secured position when you roll Rungu Dualie forward. The kickstand has several damping devices that prevent rattle when secured.

### Cautions, Warnings and Notes

***WARNING: DO NOT USE THE KICKSTAND FOR TOWING AS THIS WILL DAMAGE THE RELEASE TRIGGER.***

***WARNING: DO NOT LOAD THE KICKSTAND BEYOND THE SPECIFIED LIMIT OF 350 LBS. DOING SO MAY DAMAGE THE KICKSTAND PIVOT.***

**CAUTION: BEFORE DEPLOYING THE HEAVY-DUTY KICKSTAND, DISCONNECT RUNGU CARGO TRAILER, RUNGU DEER CART OR ANY OTHER AXLE MOUNTED TRAILER THAT MAY INTERFERE WITH KICKSTAND DEPLOYMENT.**

**Note: DO use the kickstand to lift the rear of Rungu Dualie.**

**Note: DO deploy the kickstand for derailleur tuning and rear wheel flat repair.**

### Deploying the kickstand

- Disengage parking brakes. 2024 model parking brake shown below in the disengaged position. Disconnect any trailers that may interfere with deployment



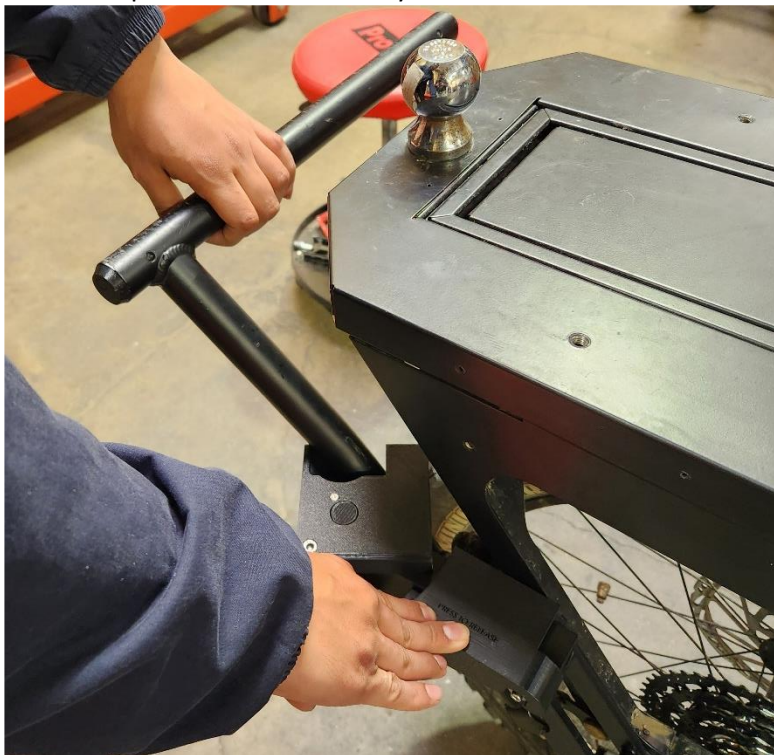
- Ensure that the front wheels are pointed straight.



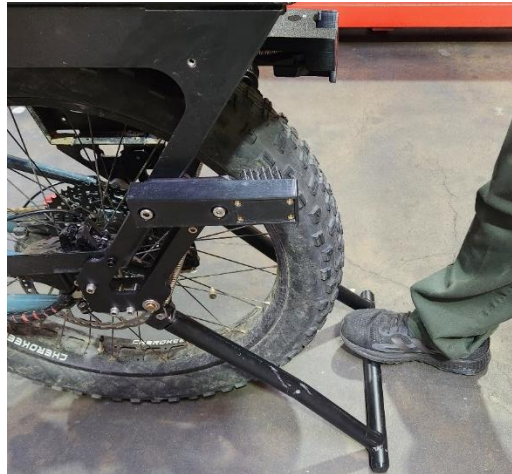
- Release the kickstand latch by pressing down on the “PRESS TO RELEASE” trigger.



- With your other hand pull the kickstand away from the latch.



- Pull the kickstand foot down to the ground and step on it to keep it in place as shown.



- Grab the back of the cargo rack and pull backwards to set the kickstand.



### Resetting the kickstand for travel

- Disengage parking brakes. (2024 Parking brake release button shown below)



- Make sure the Kickstand latch is open



- Hold the handlebars and walk the bike forward. The kickstand foot will rotate back into the kickstand latch on its own.



## Kickstand Specifications

- Max load supported weight 350 lbs.
- Max gradient parking – aligned with gradient (facing up slope) – 40%
- Max gradient parking – cross gradient – 20%

## Other questions

For other questions, please email [support@riderungu.com](mailto:support@riderungu.com) or call +1 (949) 877-9755.